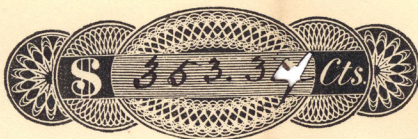


(No. 544)



Library, Directors' Chamber.

June 2^d 1881

Treasurer of the Library Company of Philadelphia.

pay to

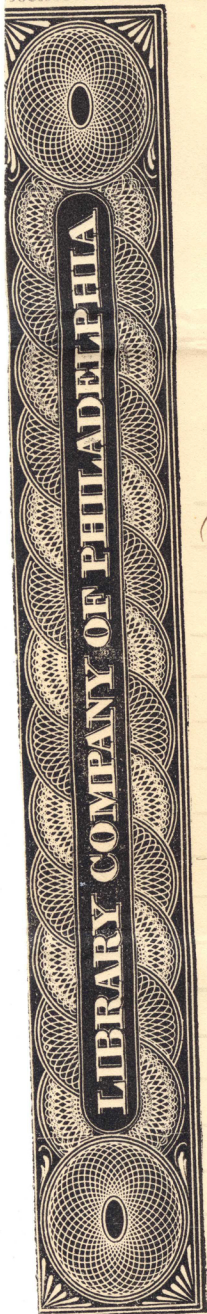
or Order,

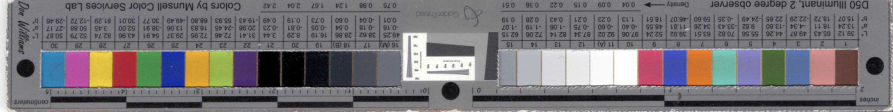
Yours self

Three hundred and fifty three ³⁴/₁₀₀ Dollars

to pay Pomcoart & Maule Heaters	155.11
" " " "	102.40
" " " "	10.50
" " " "	2.55
G. W. Snyder Papering Law Buildings	14.80
J. D. Blunck Stationery	21.00
Evening Bulletin Advertising	19.75
Inquirer "	27.15
	<u>\$ 353.34</u>

Wm. B. Biddle
Amos B. Blunck
Edw. J. Biddle
Wm. J. Biddle
Wm. J. Biddle
Wm. J. Biddle

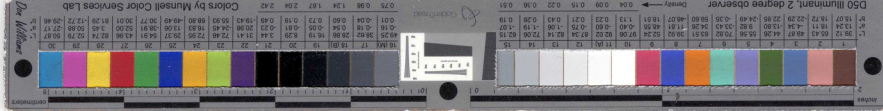




Order No 544
\$ 353.34

Layell Smith

12482.F.221



TELEPHONE—No. 110.

WROUGHT IRON PIPE,
LAP WELDED BOILER TUBES,
STEAM AND GAS FITTINGS,
BRASS AND IRON VALVES & COCKS.
FITTERS' TOOLS AND SUNDRIES.
STEAM COILS AND RADIATORS.

CONTRACTORS FOR
STEAM HEATING APPARATUS.

Agents for
Saunders's Metallic Packing,
Altica Steam Guages,
Dudgeon's Tube Expanders,
Goulds M'g Co.'s Pumps.

Claims for errors must be made on receipt of Goods, which are shipped at Buyers' risk.

Philadelphia, *May 2nd* 1881

Phila Library Co

To PANCOAST & MAULE, Dr.
243 & 245 SOUTH THIRD STREET.

Order No.

All quotations and prices are subject to change without notice.

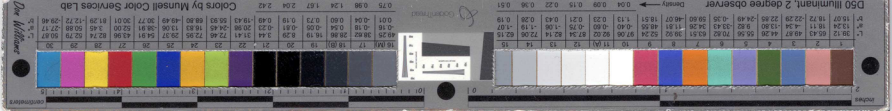
All quotations are made for immediate acceptance only, and are subject to change at any time without notice.

2	3 x 13	Bundy Radiators	=	78				
1	Circular	"		34				
		"			112 @	125	14000	
3	1"	Nickel Plated Angle Valves		375		125		
3	3/4"	"		30		900		
		"				2025		
		"				506	1519	15519

25%

Received Payment 6 Mo. 3 1881 -

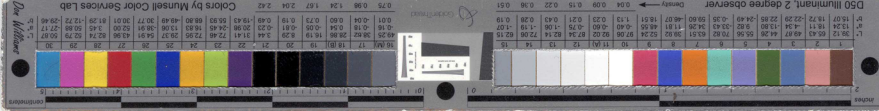
Pancoast & Maule,
per H L Webb



Received & paid
15.5.19

Order No. 111000
All quotations and prices are subject to change without notice.
243 & 245 SOUTH THIRD STREET.
T. PANCOAST & MAULE, DR.

124982.F.221



TELEPHONE—No. 110.

WROUGHT IRON PIPE,
LAP WELDED BOILER TUBES,
STEAM AND GAS FITTINGS,
BRASS AND IRON VALVES & COCKS.
FITTERS' TOOLS AND SUNDRIES.
STEAM COILS AND RADIATORS.

CONTRACTORS FOR
STEAM HEATING APPARATUS.

Agents for
Saunders's Metallic Packing,
Altica Steam Guages,
Dudgeon's Tube Expanders,
Goulds M'f'g Co.'s Pumps.

Claims for errors must be made on receipt of Goods, which are shipped at Buyers' risk.

Philadelphia, May 19th 1881

Philadelphia Library Co

To PANCOAST & MAULE, Dr.
243 & 245 SOUTH THIRD STREET.

Order No.

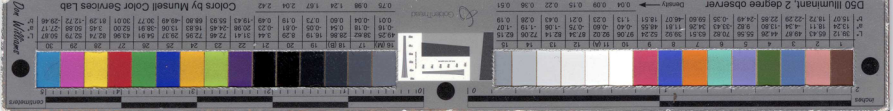
All quotations and prices are subject to change without notice.

All quotations are made for immediate acceptance only, and are subject to change at any time without notice.

1	#1	Cratt and Whitney Steam Trap	10000	
1		Wall Drill	60	
3	3/4"	Brass Ferrules		
3	1"	"	180	10240

Duplicate

Received Payment 6 Mo. 31881
Pancoast & Maule,
per H. Loebl



Panchoast & Maule

paid

1029.40

Supplies

Panchoast & Maule

Panchoast & Maule

Wells & Co's
3 1/4" Gas

10000
00

Order No.

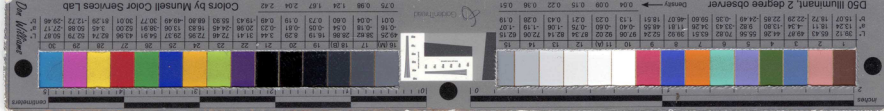
243 & 245 SOUTH THIRD STREET.

T. PANCHOAST & MAULE, DR.

Philadelphia, May 19 1881

(Claims for errors must be made on receipt of Goods, which are shipped at Buyers' risk.)

12482.F.221



TELEPHONE—No. 110.

WROUGHT IRON PIPE,
LAP WELDED BOILER TUBES,
STEAM AND GAS FITTINGS,
BRASS AND IRON VALVES & COCKS.
FITTERS' TOOLS AND SUNDRIES.
STEAM COILS AND RADIATORS.

CONTRACTORS FOR
STEAM HEATING APPARATUS.

Agents for
Saunders' Metallic Lathing,
Utica Steam Guages,
Dudgeon's Tube Expanders,
Goulds M'f'g Co.'s Pumps.

Claims for errors must be made on receipt of Goods, which are shipped at Buyers' risk.

Philadelphia, *May 27th* 188*1*

Phila Library Co

TO PANCOAST & MAULE, Dr.
243 & 245 SOUTH THIRD STREET.

Order No.

All quotations and prices are subject to change without notice.

All quotations are made for immediate acceptance only, and are subject to change at any time without notice.

1 #1 Receiver
4 1/8" Elbs
4 1/8" Nipples
6 1 1/2"
2 1 1/2" Fws

06
07
59
60

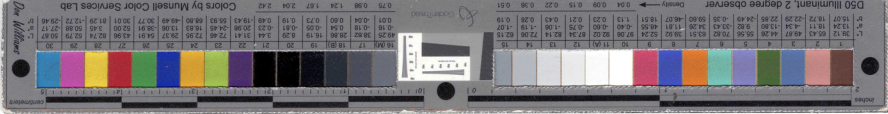
24.
28
162.
120

334.

25%

84. 250. 1050

Received Payment 6 Mo. 31881
Pancoast & Maule,
per. H. L. Webb



WROUGHT IRON PIPE
LAP WELDED BOILER TUBES
STEAM AND GAS FITTINGS
BRASS AND IRON VALVES & COCKS
PITTMER'S TOOLS AND SUNDRIES
STEAM COILS AND RADIATORS
CONTRACTORS FOR
HEATING APPARATUS
Gas Fitters
Boilers & Steam Fitting
Steam Steam Engines
Pittmer's & Co's Pumps

Panicoast & Mauld
Paul
\$ 10.50

T. PANICOAST & MAULD, D.
243 & 245 SOUTH THIRD STREET.

Order No. _____
All quotations and prices are subject to change without notice.

All quotations are made for immediate acceptance only, and are subject to change at any time without notice.	
1/2" Galv	2.00
3/4" Galv	2.50
1" Galv	3.00
1 1/4" Galv	3.50
1 1/2" Galv	4.00
2" Galv	5.00
2 1/2" Galv	6.00
3" Galv	7.00
3 1/2" Galv	8.00
4" Galv	9.00
4 1/2" Galv	10.00
5" Galv	11.00
5 1/2" Galv	12.00
6" Galv	13.00
6 1/2" Galv	14.00
7" Galv	15.00
7 1/2" Galv	16.00
8" Galv	17.00
8 1/2" Galv	18.00
9" Galv	19.00
9 1/2" Galv	20.00
10" Galv	21.00
10 1/2" Galv	22.00
11" Galv	23.00
11 1/2" Galv	24.00
12" Galv	25.00
12 1/2" Galv	26.00
13" Galv	27.00
13 1/2" Galv	28.00
14" Galv	29.00
14 1/2" Galv	30.00
15" Galv	31.00
15 1/2" Galv	32.00
16" Galv	33.00
16 1/2" Galv	34.00
17" Galv	35.00
17 1/2" Galv	36.00
18" Galv	37.00
18 1/2" Galv	38.00
19" Galv	39.00
19 1/2" Galv	40.00
20" Galv	41.00
20 1/2" Galv	42.00
21" Galv	43.00
21 1/2" Galv	44.00
22" Galv	45.00
22 1/2" Galv	46.00
23" Galv	47.00
23 1/2" Galv	48.00
24" Galv	49.00
24 1/2" Galv	50.00
25" Galv	51.00
25 1/2" Galv	52.00
26" Galv	53.00
26 1/2" Galv	54.00
27" Galv	55.00
27 1/2" Galv	56.00
28" Galv	57.00
28 1/2" Galv	58.00
29" Galv	59.00
29 1/2" Galv	60.00
30" Galv	61.00
30 1/2" Galv	62.00
31" Galv	63.00
31 1/2" Galv	64.00
32" Galv	65.00
32 1/2" Galv	66.00
33" Galv	67.00
33 1/2" Galv	68.00
34" Galv	69.00
34 1/2" Galv	70.00
35" Galv	71.00
35 1/2" Galv	72.00
36" Galv	73.00
36 1/2" Galv	74.00
37" Galv	75.00
37 1/2" Galv	76.00
38" Galv	77.00
38 1/2" Galv	78.00
39" Galv	79.00
39 1/2" Galv	80.00
40" Galv	81.00
40 1/2" Galv	82.00
41" Galv	83.00
41 1/2" Galv	84.00
42" Galv	85.00
42 1/2" Galv	86.00
43" Galv	87.00
43 1/2" Galv	88.00
44" Galv	89.00
44 1/2" Galv	90.00
45" Galv	91.00
45 1/2" Galv	92.00
46" Galv	93.00
46 1/2" Galv	94.00
47" Galv	95.00
47 1/2" Galv	96.00
48" Galv	97.00
48 1/2" Galv	98.00
49" Galv	99.00
49 1/2" Galv	100.00
50" Galv	101.00
50 1/2" Galv	102.00
51" Galv	103.00
51 1/2" Galv	104.00
52" Galv	105.00
52 1/2" Galv	106.00
53" Galv	107.00
53 1/2" Galv	108.00
54" Galv	109.00
54 1/2" Galv	110.00
55" Galv	111.00
55 1/2" Galv	112.00
56" Galv	113.00
56 1/2" Galv	114.00
57" Galv	115.00
57 1/2" Galv	116.00
58" Galv	117.00
58 1/2" Galv	118.00
59" Galv	119.00
59 1/2" Galv	120.00
60" Galv	121.00
60 1/2" Galv	122.00
61" Galv	123.00
61 1/2" Galv	124.00
62" Galv	125.00
62 1/2" Galv	126.00
63" Galv	127.00
63 1/2" Galv	128.00
64" Galv	129.00
64 1/2" Galv	130.00
65" Galv	131.00
65 1/2" Galv	132.00
66" Galv	133.00
66 1/2" Galv	134.00
67" Galv	135.00
67 1/2" Galv	136.00
68" Galv	137.00
68 1/2" Galv	138.00
69" Galv	139.00
69 1/2" Galv	140.00
70" Galv	141.00
70 1/2" Galv	142.00
71" Galv	143.00
71 1/2" Galv	144.00
72" Galv	145.00
72 1/2" Galv	146.00
73" Galv	147.00
73 1/2" Galv	148.00
74" Galv	149.00
74 1/2" Galv	150.00
75" Galv	151.00
75 1/2" Galv	152.00
76" Galv	153.00
76 1/2" Galv	154.00
77" Galv	155.00
77 1/2" Galv	156.00
78" Galv	157.00
78 1/2" Galv	158.00
79" Galv	159.00
79 1/2" Galv	160.00
80" Galv	161.00
80 1/2" Galv	162.00
81" Galv	163.00
81 1/2" Galv	164.00
82" Galv	165.00
82 1/2" Galv	166.00
83" Galv	167.00
83 1/2" Galv	168.00
84" Galv	169.00
84 1/2" Galv	170.00
85" Galv	171.00
85 1/2" Galv	172.00
86" Galv	173.00
86 1/2" Galv	174.00
87" Galv	175.00
87 1/2" Galv	176.00
88" Galv	177.00
88 1/2" Galv	178.00
89" Galv	179.00
89 1/2" Galv	180.00
90" Galv	181.00
90 1/2" Galv	182.00
91" Galv	183.00
91 1/2" Galv	184.00
92" Galv	185.00
92 1/2" Galv	186.00
93" Galv	187.00
93 1/2" Galv	188.00
94" Galv	189.00
94 1/2" Galv	190.00
95" Galv	191.00
95 1/2" Galv	192.00
96" Galv	193.00
96 1/2" Galv	194.00
97" Galv	195.00
97 1/2" Galv	196.00
98" Galv	197.00
98 1/2" Galv	198.00
99" Galv	199.00
99 1/2" Galv	200.00
100" Galv	201.00
100 1/2" Galv	202.00
101" Galv	203.00
101 1/2" Galv	204.00
102" Galv	205.00
102 1/2" Galv	206.00
103" Galv	207.00
103 1/2" Galv	208.00
104" Galv	209.00
104 1/2" Galv	210.00
105" Galv	211.00
105 1/2" Galv	212.00
106" Galv	213.00
106 1/2" Galv	214.00
107" Galv	215.00
107 1/2" Galv	216.00
108" Galv	217.00
108 1/2" Galv	218.00
109" Galv	219.00
109 1/2" Galv	220.00
110" Galv	221.00
110 1/2" Galv	222.00
111" Galv	223.00
111 1/2" Galv	224.00
112" Galv	225.00
112 1/2" Galv	226.00
113" Galv	227.00
113 1/2" Galv	228.00
114" Galv	229.00
114 1/2" Galv	230.00
115" Galv	231.00
115 1/2" Galv	232.00
116" Galv	233.00
116 1/2" Galv	234.00
117" Galv	235.00
117 1/2" Galv	236.00
118" Galv	237.00
118 1/2" Galv	238.00
119" Galv	239.00
119 1/2" Galv	240.00
120" Galv	241.00
120 1/2" Galv	242.00
121" Galv	243.00
121 1/2" Galv	244.00
122" Galv	245.00
122 1/2" Galv	246.00
123" Galv	247.00
123 1/2" Galv	248.00
124" Galv	249.00
124 1/2" Galv	250.00
125" Galv	251.00
125 1/2" Galv	252.00
126" Galv	253.00
126 1/2" Galv	254.00
127" Galv	255.00
127 1/2" Galv	256.00
128" Galv	257.00
128 1/2" Galv	258.00
129" Galv	259.00
129 1/2" Galv	260.00
130" Galv	261.00
130 1/2" Galv	262.00
131" Galv	263.00
131 1/2" Galv	264.00
132" Galv	265.00
132 1/2" Galv	266.00
133" Galv	267.00
133 1/2" Galv	268.00
134" Galv	269.00
134 1/2" Galv	270.00
135" Galv	271.00
135 1/2" Galv	272.00
136" Galv	273.00
136 1/2" Galv	274.00
137" Galv	275.00
137 1/2" Galv	276.00
138" Galv	277.00
138 1/2" Galv	278.00
139" Galv	279.00
139 1/2" Galv	280.00
140" Galv	281.00
140 1/2" Galv	282.00
141" Galv	283.00
141 1/2" Galv	284.00
142" Galv	285.00
142 1/2" Galv	286.00
143" Galv	287.00
143 1/2" Galv	288.00
144" Galv	289.00
144 1/2" Galv	290.00
145" Galv	291.00
145 1/2" Galv	292.00
146" Galv	293.00
146 1/2" Galv	294.00
147" Galv	295.00
147 1/2" Galv	296.00
148" Galv	297.00
148 1/2" Galv	298.00
149" Galv	299.00
149 1/2" Galv	300.00
150" Galv	301.00
150 1/2" Galv	302.00
151" Galv	303.00
151 1/2" Galv	304.00
152" Galv	305.00
152 1/2" Galv	306.00
153" Galv	307.00
153 1/2" Galv	308.00
154" Galv	309.00
154 1/2" Galv	310.00
155" Galv	311.00
155 1/2" Galv	312.00
156" Galv	313.00
156 1/2" Galv	314.00
157" Galv	315.00
157 1/2" Galv	316.00
158" Galv	317.00
158 1/2" Galv	318.00
159" Galv	319.00
159 1/2" Galv	320.00
160" Galv	321.00
160 1/2" Galv	322.00
161" Galv	323.00
161 1/2" Galv	324.00
162" Galv	325.00
162 1/2" Galv	326.00
163" Galv	327.00
163 1/2" Galv	328.00
164" Galv	329.00
164 1/2" Galv	330.00
165" Galv	331.00
165 1/2" Galv	332.00
166" Galv	333.00
166 1/2" Galv	334.00
167" Galv	335.00
167 1/2" Galv	336.00
168" Galv	337.00
168 1/2" Galv	338.00
169" Galv	339.00
169 1/2" Galv	340.00
170" Galv	341.00
170 1/2" Galv	342.00
171" Galv	343.00
171 1/2" Galv	344.00
172" Galv	345.00
172 1/2" Galv	346.00
173" Galv	347.00
173 1/2" Galv	348.00
174" Galv	349.00
174 1/2" Galv	350.00
175" Galv	351.00
175 1/2" Galv	352.00
176" Galv	353.00
176 1/2" Galv	354.00
177" Galv	355.00
177 1/2" Galv	356.00
178" Galv	357.00
178 1/2" Galv	358.00
179" Galv	359.00
179 1/2" Galv	360.00
180" Galv	361.00
180 1/2" Galv	362.00
181" Galv	363.00
181 1/2" Galv	364.00
182" Galv	365.00
182 1/2" Galv	366.00
183" Galv	367.00
183 1/2" Galv	368.00
184" Galv	369.00
184 1/2" Galv	370.00
185" Galv	371.00
185 1/2" Galv	372.00
186" Galv	373.00
186 1/2" Galv	374.00
187" Galv	375.00
187 1/2" Galv	376.00
188" Galv	377.00
188 1/2" Galv	378.00
189" Galv	379.00
189 1/2" Galv	380.00
190" Galv	381.00
190 1/2" Galv	382.00
191" Galv	383.00
191 1/2" Galv	384.00
192" Galv	385.00
192 1/2" Galv	386.00
193" Galv	387.00
193 1/2" Galv	388.00
194" Galv	389.00
194 1/2" Galv	390.00
195" Galv	391.00
195 1/2" Galv	392.00
196" Galv	393.00
196 1/2" Galv	394.00
197" Galv	395.00
197 1/2" Galv	396.00
198" Galv	397.00
198 1/2" Galv	398.00
199" Galv	399.00
199 1/2" Galv	400.00
200" Galv	401.00
200 1/2" Galv	402.00
201" Galv	403.00
201 1/2" Galv	404.00
202" Galv	405.00
202 1/2" Galv	406.00
203" Galv	407.00
203 1/2" Galv	408.00
204" Galv	409.00
204 1/2" Galv	410.00
205" Galv	411.00
205 1/2" Galv	412.00
206" Galv	413.00
206 1/2" Galv	414.00
207" Galv	415.00
207 1/2" Galv	416.00
208" Galv	417.00
208 1/2" Galv	418.00
209" Galv	419.00
209 1/2" Galv	420.00
210" Galv	421.00
210 1/2" Galv	422.00
211" Galv	423.00
211 1/2" Galv	424.00
212" Galv	425.00
212 1/2" Galv	426.00
213" Galv	427.00
213 1/2" Galv	428.00
214" Galv	429.00
214 1/2" Galv	430.00
215" Galv	431.00
215 1/2" Galv	432.00
216" Galv	433.00
216 1/2" Galv	434.00
217" Galv	435.00
217 1/2" Galv	436.00
218" Galv	437.00
218 1/2" Galv	4

TELEPHONE—No. 110.

WROUGHT IRON PIPE,
LAP WELDED BOILER TUBES,
STEAM AND GAS FITTINGS,
BRASS AND IRON VALVES & COCKS.
FITTERS' TOOLS AND SUNDRIES.
STEAM COILS AND RADIATORS.

CONTRACTORS FOR
STEAM HEATING APPARATUS.

Agents for
Saunders' Metallic Packing,
Altica Steam Gauges,
Dudgeon's Tube Expanders,
Goulds M'f'g Co.'s Pumps.

Claims for errors must be made on receipt of Goods, which are shipped at Buyers' risk.

Philadelphia, *May 23rd* 188*1*

Phila Library Co

To **PANCOAST & MAULE, Dr.**

243 & 245 SOUTH THIRD STREET.

Order No.

All quotations and prices are subject to change without notice.

All quotations are made for immediate acceptance only, and are subject to change at any time without notice.

6 *3/4" Nipples*
6 *1"*
1 *3/4" L & C Stop cock*

13

78

17

102

160

340

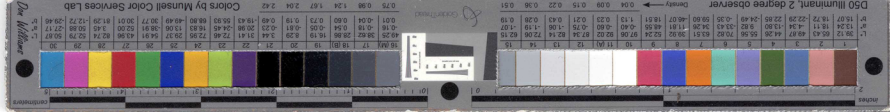
85

25%

255

Received Payment 6 Mo. \$138

*Pancoast & Maule,
per H. L. Webb*



PHILADELPHIA, May 2nd 1881

In the Libray Company of Philadelphia
TO GEO. W. SNYDER, Dr.

PAPER & HANGER,

1551 Camac Street,

To Papering office Third Floor of	
No 115 S 3 rd st	
42 Peices of Paper at 30¢ Per. Pon wall	12 60
5½ " Bordes at 40¢ " " "	2 20
	\$ 14.80

Received Payment
G. W. Snyder

Geo. M. Snyder

Repairs

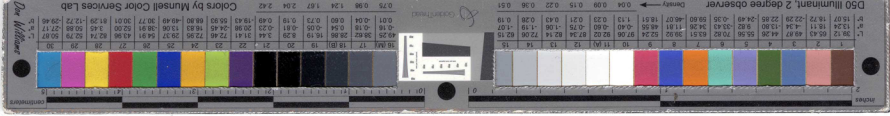
\$14.80

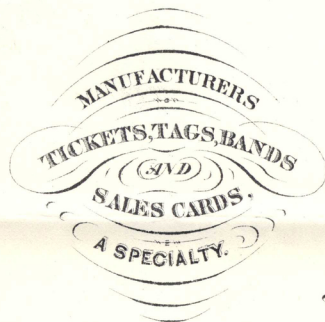
paid

Law Buildings

This bill is correct.
work satisfactory
Geo. M. Snyder,

12482.F.221





Philadelphia May 14 1881

Philada Library Co

To Jos. T. Burr & Co. Dr.

Blank Book Makers Lithographic & Letter Press Printers.

Business Office Room No. 3,

310 Chestnut Street.

6 M Cards ruled & printed 3.50 21.00

Received Payment
Jos. T. Burr & Co.

J. J. Davis & Co
Stationery
Paid \$21. -



12482.F.221

Evening Bulletin,

PUBLISHED BY
PEACOCK, FETHERSTON & CO.,
No. 607 Chestnut St.

Philadelphia, *April* 1881

McClary & Co. of Penna

To PHILADELPHIA EVENING BULLETIN, Dr.

To Advertising.

607 Chestnut Street.

On 14 Annual Election 18. Shu Sa to 8. 1800
May 3 Tuesday 14 15 175

\$1975

*May 9/81 Rec'd by you
Peacock, Fetherston & Co
per J. L. W. Wick*

LIBRARY COMPANY.
The Annual Election of Directors and a Treasurer of the LIBRARY COMPANY OF PHILADELPHIA will be held at the Library, on MONDAY, the 2d day of May next, at three o'clock in the afternoon, when the Treasurer will attend to receive the annual payments.
As there are several shares on which fines are due, the owners of them or their representatives are hereby notified that they will be forfeited, agreeably to the charter and laws of the Company, unless the arrears are paid off on the 2d day of May, or within ten days thereafter.
GEORGE HARRISON FISHER,
Secretary.
No books will be given out or received on that afternoon.
ap14th.s.tu8t0

PENNSYLVANIA ORTHODOX

LIBRARY COMPANY OF PHILADELPHIA.

MAY 2, 1881.

At an election for Directors and a Treasurer of the Library Company of Philadelphia the following officers were appointed for the ensuing year:

DIRECTORS.

Charles Willing,
David Lewis,
J. I. Clark Hare,
Henry Cramond,
James S. Biddle,
John S. Newbold,

Caspar Wister,
Edward S. Buckley,
S. Weir Mitchell,
James H. Hutchinson,
Wm. Henry Rawle,
Charles Platt.

TREASURER—LLOYD P. SMITH.

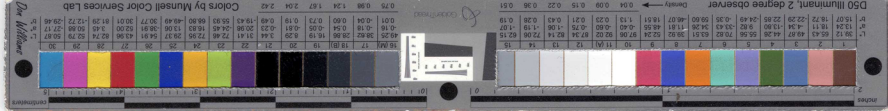
166



12482.F.221

Evening Bulletin
Paris
14.75

Printed by J. J. J. J. J.



LIBRARY COMPANY. THE AN-
 nual Election of Directors and a Treas-
 urer of the LIBRARY COMPANY OF PHILA-
 DELPHIA will be held at the Library, on MON-
 DAY, the 2d day of May next, at three o'clock in the
 afternoon, when the Treasurer will attend to receive
 the annual payments.

As there are several shares on which fines are due,
 the owners of them or their representatives are
 hereby notified that they will be forfeited, agreeably
 to the charter and laws of the Company, unless the
 arrears are paid off on the 2d day of May, or within
 ten days thereafter.

GEORGE HARRISON FISHER,

Secretary.

No books will be given out or received on that
 afternoon.

LIBRARY COMPANY OF PHILA-
 Delphia, May 2, 1881.

At an election for Directors and a Treasurer of
 the Library Company of Philadelphia the following
 officers were appointed for the ensuing year:

DIRECTORS.
 Charles Willing,
 David Lewis,
 J. I. Clark Hare,
 Henry Cramond,
 James S. Biddle,
 John S. Newbold,

Caspar Wister,
 Edward S. Buckley,
 S. Weir Mitchell,
 James H. Hutchinson,
 Wm. Henry Rawle,
 Charles Platt.
 Treasurer—Lloyd P. Smith.

STNUT STREET.

lphia,

18

of Philadelp

To Philadelphia Inquirer, Dr.

WILLIAM W. HARDING, Publisher.

1881

Apr	14	To a mg Annual Election	2108t	2520	\$	
May	4	Officers	13-1-	195	\$	2715
		Recd Payment 5/11/81				
		W. W. Harding				
		Richard				

*Inquire
\$ 20.13*

paid

12492.F.221

