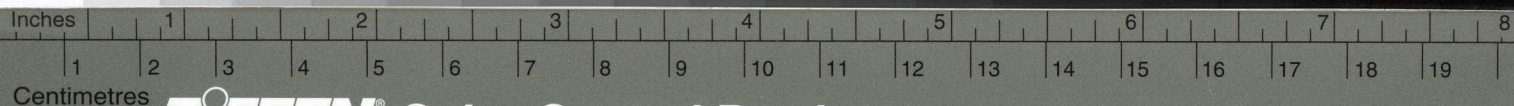
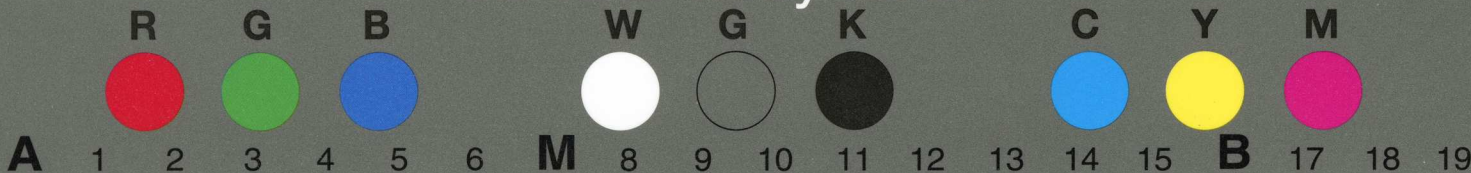


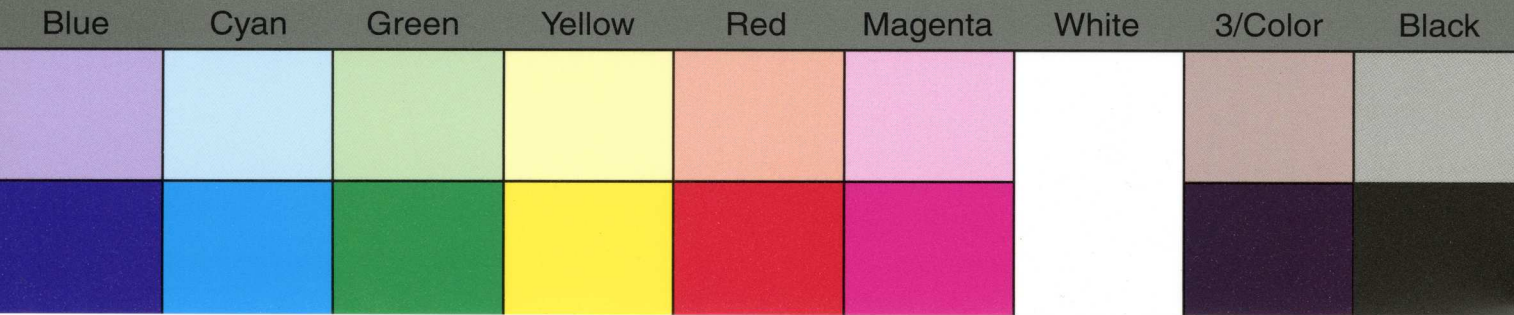
# TIFFEN® Gray Scale

© The Tiffen Company, 2007



## TIFFEN® Color Control Patches

© The Tiffen Company, 2007



Present your bills first to the Discount Clerk, and then pay them to the Cashier, who is the only Officer or Employee of the Tax Department authorized by Law to receive payment. Before paying bills, see that no property is omitted. A penalty of 5 per cent is imposed on all State Tax remaining unpaid on and after the first day of August, 1879.

Office of RECEIVER OF TAXES, Philadelphia, *Nov 11* 1879.

*Library Co of Phila* Dr. for Taxes for 1879.

Page	DESCRIPTION OF PROPERTY IN <b>Ward.</b>	Valuation	City Tax. Rate, \$2.05	State Tax	Dollars	Cts.
<i>194</i>	<i>576 Vine St</i>	<i>8500</i>	<i>17425</i>		<i>224</i>	<i>306</i>
<i>23</i>	<i>62 N Front</i>	<i>9500</i>	<i>19475</i>			
	<i>647.66 or</i>	<i>13900</i>	<i>26650</i>			
<i>41</i>	<i>10 S 2nd</i>	<i>6000</i>	<i>123</i>			
		<i>37,000</i>	<i>75850</i>			
			<i>1432</i>			
			<i>74418</i>			

Poor, . . . . . 9  
School, . . . . . 21  
Lighting City, . . . . . 7  
Loans, . . . . . 80  
Highways, . . . . . 10  
Water, . . . . . 8  
Police, . . . . . 22  
Markets & City Prop. . . . . 3  
Fire, . . . . . 3  
Prisons, . . . . . 3  
City Commissioners, . . . . . 8  
Health, . . . . . 8  
Ex. of Municipality, . . . . . 18

\$2.05

Extract of Ordinance of Councils, Approved Dec. 31st, 1877:—That upon all taxes paid on or before the thirty-first of August, a discount at the rate of four per cent. per annum shall be allowed. If paid after the thirty-first day of August, and on or before the fifteenth day of September, an addition or penalty of one-half of one per cent. shall be added and made payable to the same. If paid after the fifteenth day of September, and on or before the first day of October, there shall be an addition or penalty of one per cent. If paid after the first day of October, and on or before the fifteenth day of October, there shall be an addition or penalty of one and one-half per cent. If paid after the fifteenth day of October, and on or before the first day of November, there shall be an addition or penalty of two per cent. If paid after the first day of November, and on or before the fifteenth day of November, there shall be an addition or penalty of two and one-half per cent. If paid after the fifteenth day of November, and on or before the first day of December, there shall be an addition or penalty of three per cent. If paid after the first day of December, and on or before the fifteenth day of December, there shall be an addition or penalty of three and one-half per cent. If paid after the fifteenth day of December, and on or before the first day of January, there shall be an addition or penalty of four per cent. If paid after the first day of January, and on or before the fifteenth day of January, there shall be an addition or penalty of four and one-half per cent.; and upon all taxes remaining unpaid after the fifteenth day of January, there shall be an addition or penalty of five per cent. added to and made payable upon the same.

State Tax on Pleasure Carriages,.....1 per cent.

General Rate for State Tax,.....30 Cents.

Received Payment for

**ALBERT C. ROBERTS,**

Receiver of Taxes.

*Dep. Receiver.*