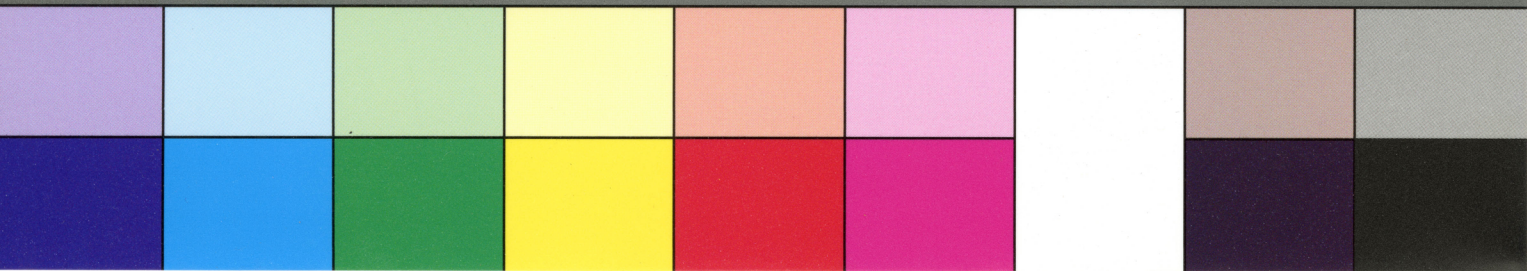


## TIFFEN® Color Control Patches

© The Tiffen Company, 2007

Blue Cyan Green Yellow Red Magenta White 3/Color Black



Present your bills first to the Discount Clerk, and then pay them to the Cashier, who is the only Officer or Employee of the Tax Department authorized by Law to receive payment. Before paying bills, see that no property is omitted. A penalty of 5 per cent. is imposed on all State Tax remaining unpaid on and after the first day of August, 1881.

Office of RECEIVER OF TAXES, Philadelphia, 19 1881.  
Library Co. of Phila. DR. for Taxes for 1881.

### DESCRIPTION OF PROPERTY IN

10 WARD.

Page	Valuation.	City Tax Rate, \$1.95.	State Tax.	Dollars.	Cts.
148	14500	28275			
150	14500	28275			
152	15000	29250			
133	16000	31200			
60000 119000					
855					
116145					

Poor, . . . . . 8  
School, . . . . . 20  
Lighting City, . . . . . 5  
Loan, . . . . . 80  
Highways, . . . . . 7  
Water, . . . . . 8  
Police, . . . . . 21  
Markets & City Prop. 3  
Fire, . . . . . 8  
Prisons, . . . . . 3  
City Commissioners, 8  
Health, . . . . . 8  
Ex. of Municipality, 16

Extract from Ordinance of Councils, Approved Dec. 8th, 1880:—That upon all taxes paid on or before the thirty-first of August, a discount at the rate of one per cent. per annum shall be allowed. If paid after the thirty first day of August, and on or before the fifteenth day of September, an addition or penalty of one half of one per cent. shall be added and made payable to the same. If paid after the fifteenth day of September, and on or before the first day of October, there shall be an addition or penalty of one per cent. If paid after the first day of October, and on or before the fifteenth day of October, there shall be an addition or penalty of one and one-half per cent. If paid after the fifteenth day of October, and on or before the first day of November, there shall be an addition or penalty of two per cent. If paid after the first day of November, and on or before the fifteenth day of November, there shall be an addition or penalty of two and one-half per cent. If paid after the fifteenth day of November, and on or before the first day of December, there shall be an addition or penalty of three per cent. If paid after the first day of December, and on or before the fifteenth day of December, there shall be an addition or penalty of three and one-half per cent. If paid after the fifteenth day of December, and on or before the first day of January, there shall be an addition or penalty of four per cent. added to and made payable upon the same.

State Tax on Pleasure Carriages, 1 per cent. State Tax on Furniture, 3 mills.  
State Tax on Money at interest, 4 mills.

Received Payment for

JOHN HUNTER,

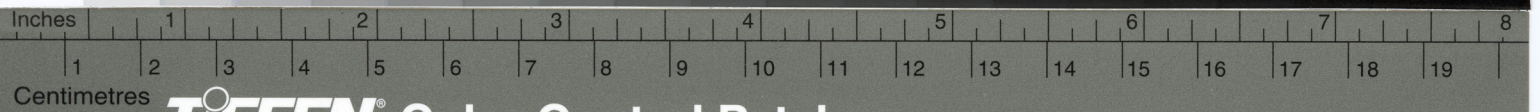
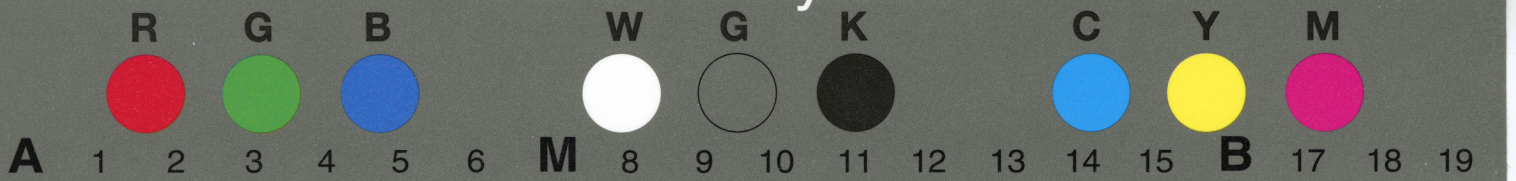
Receiver of Taxes,

*McManis*  
Dep. Receiver.



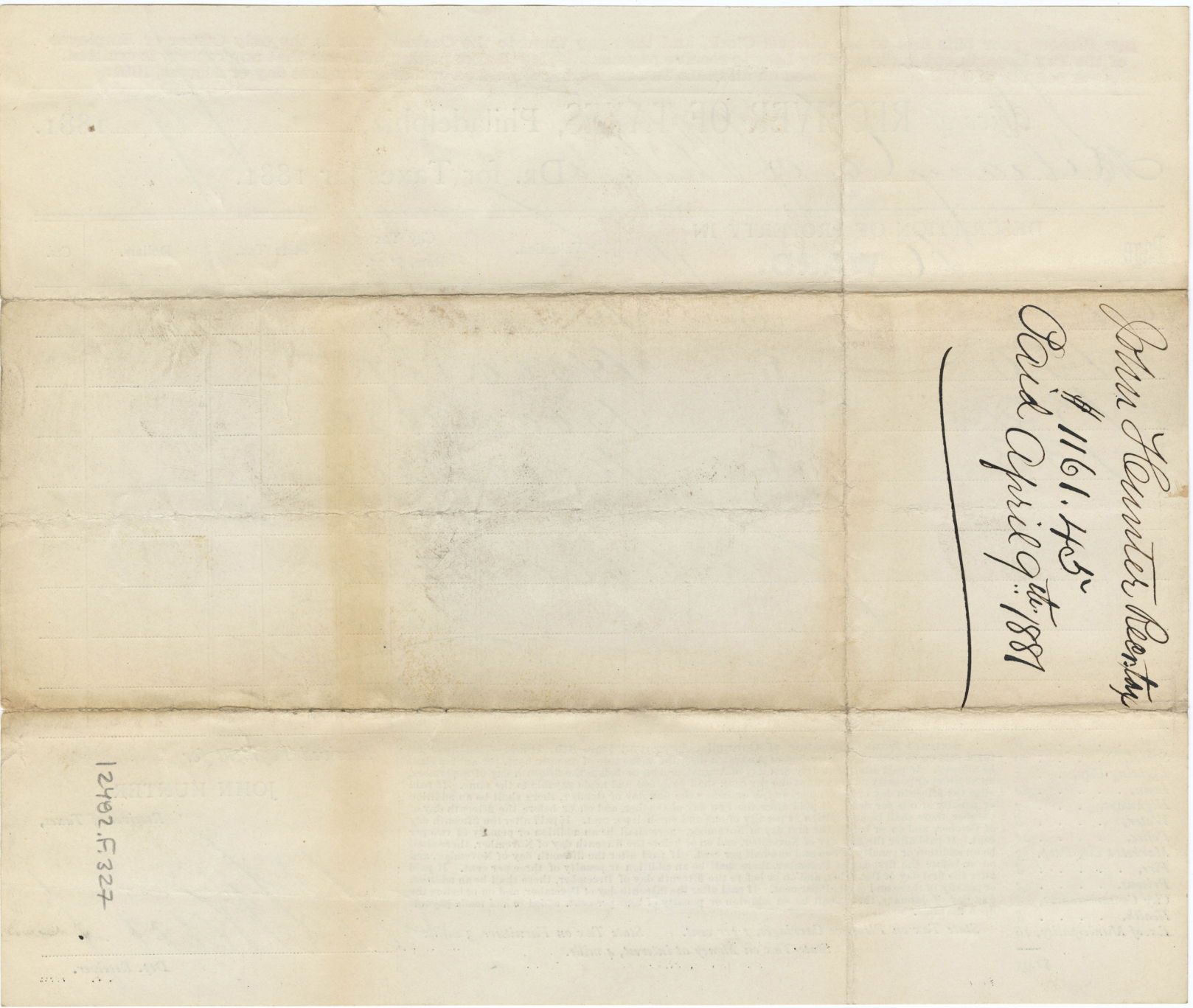
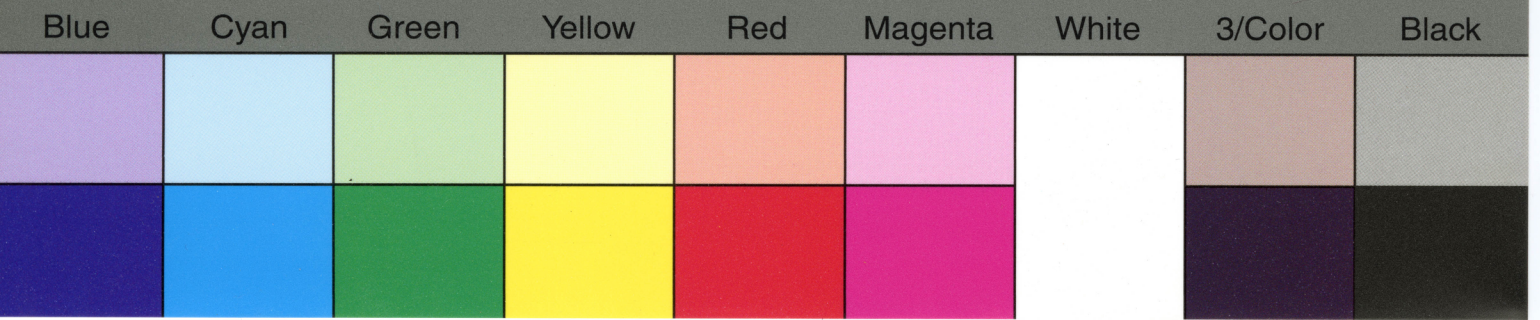
# TIFFEN® Gray Scale

© The Tiffen Company, 2007



## TIFFEN® Color Control Patches

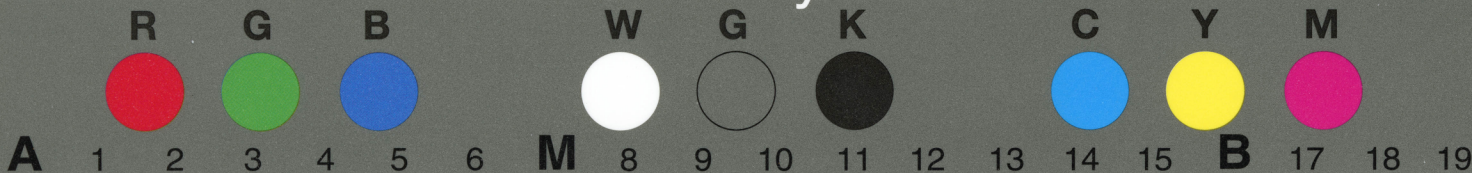
© The Tiffen Company, 2007





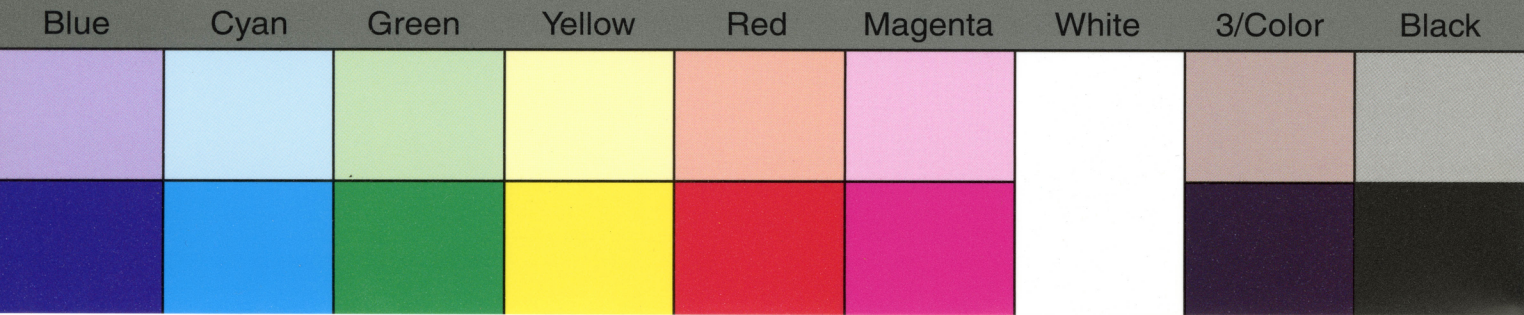
# TIFFEN® Gray Scale

© The Tiffen Company, 2007



## TIFFEN® Color Control Patches

© The Tiffen Company, 2007



Present your bills first to the Discount Clerk, and then pay them to the Cashier, who is the only Officer or Employee of the Tax Department authorized by Law to receive payment. Before paying bills, see that no property is omitted. A penalty of 5 per cent. is imposed on all State Tax remaining unpaid on and after the first day of August, 1881.

Office of RECEIVER OF TAXES, Philadelphia, *Nov 14* 1881.

*Mc Philad's Library Co* DR. for Taxes for 1881.

Page	DESCRIPTION OF PROPERTY IN	Valuation.	City Tax Rate, \$1.95.	State Tax.	Dollars.	Cts.
	<i>14 WARD.</i>					
<i>36</i>	<i>1200 Callonhill St-</i>	<i>5000</i>	<i>97 50</i>			
	<i>1202-1208 " "</i>	<i>16000</i>	<i>312 00</i>			
<i>291</i>	<i>330-334 N 12th "</i>	<i>13500</i>	<i>263 25</i>			
		<i>34500</i>	<i>672 75</i>			
			<i>370</i>			
			<i>689 75</i>			
	<i>1516</i>					

Poor, . . . . .	8
School, . . . . .	20
Lighting City, . . . . .	5
Loan, . . . . .	80
Highways, . . . . .	7
Water, . . . . .	8
Police, . . . . .	21
Markets & City Prop. . . . .	3
Fire, . . . . .	8
Prisons, . . . . .	3
City Commissioners, . . . . .	8
Health, . . . . .	8
Ex. of Municipality, . . . . .	16

\$1.95

Extract from Ordinance of Councils, Approved Dec. 8th, 1880:—That upon all taxes paid on or before the thirty-first of August, a discount at the rate of one per cent. per annum shall be allowed. If paid after the thirty-first day of August, and on or before the fifteenth day of September, an addition or penalty of one half of one per cent. shall be added and made payable to the same. If paid after the fifteenth day of September, and on or before the first day of October, there shall be an addition or penalty of one per cent. If paid after the first day of October, and on or before the fifteenth day of October, there shall be an addition or penalty of one and one-half per cent. If paid after the fifteenth day of October, and on or before the first day of November, there shall be an addition or penalty of two per cent. If paid after the first day of November, and on or before the fifteenth day of November, there shall be an addition or penalty of two and one-half per cent. If paid after the fifteenth day of November, and on or before the first day of December, there shall be an addition or penalty of three per cent. If paid after the first day of December, and on or before the fifteenth day of December, there shall be an addition or penalty of three and one-half per cent. If paid after the fifteenth day of December, and on or before the first day of January, there shall be an addition or penalty of four per cent. added to and made payable upon the same.

State Tax on Pleasure Carriages, 1 per cent. State Tax on Furniture, 3 mills.  
State Tax on Money at interest, 4 mills.

Received Payment for

JOHN HUNTER,

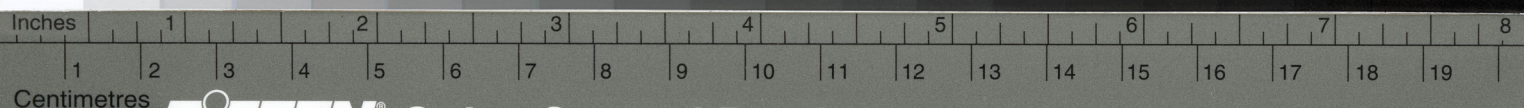
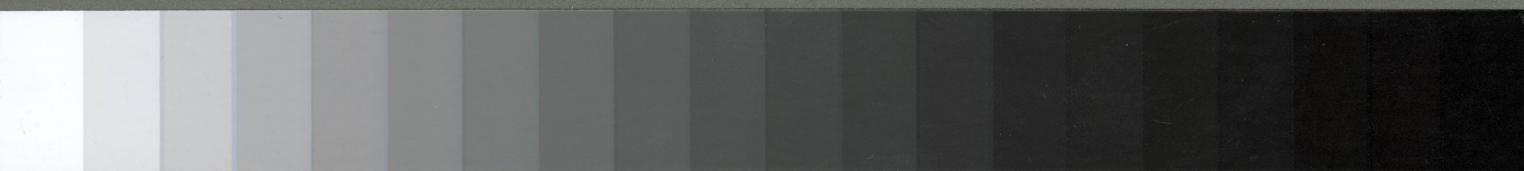
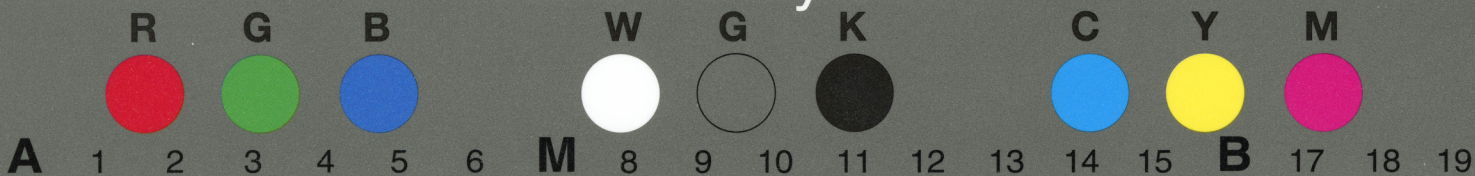
Receiver of Taxes,

*John Hunter*  
Dep. Receiver.



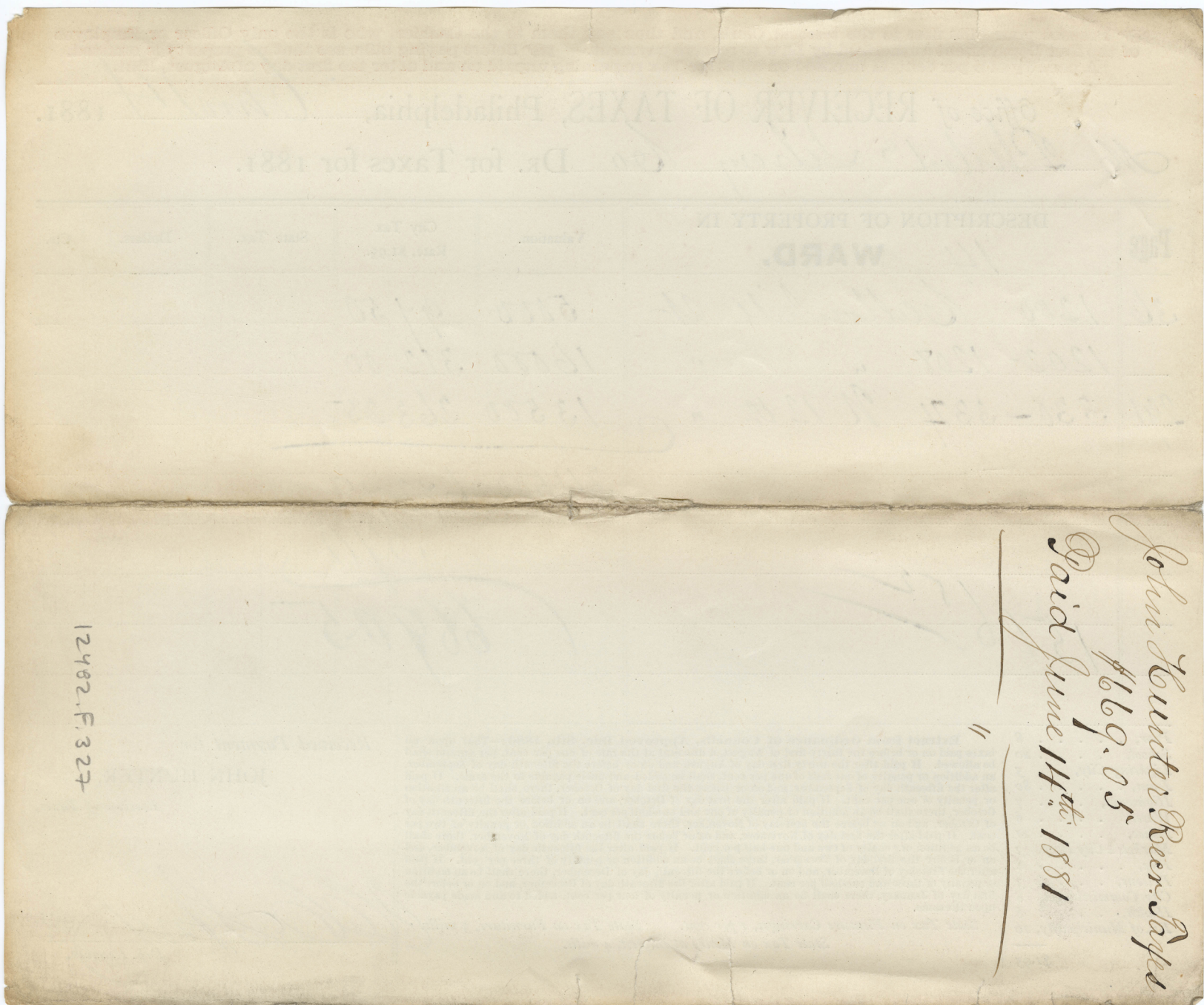
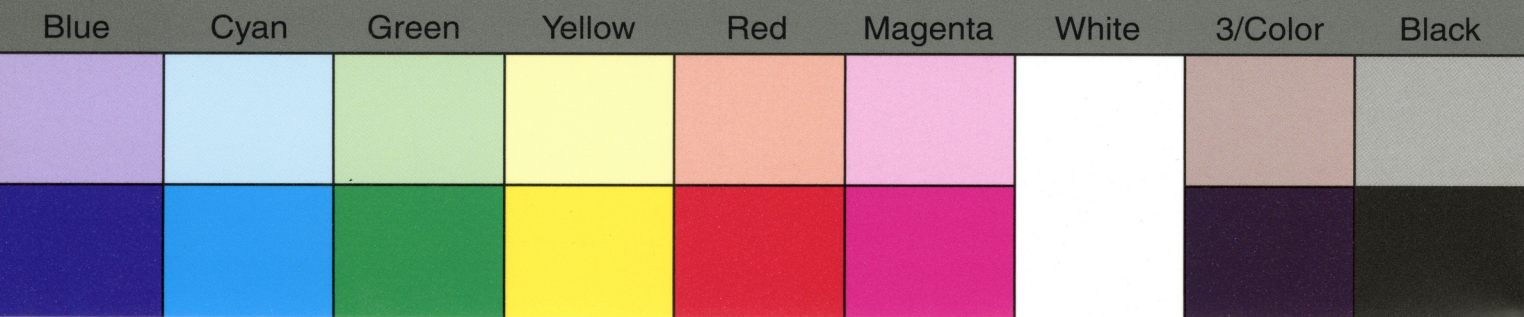
# TIFFEN® Gray Scale

© The Tiffen Company, 2007



## TIFFEN® Color Control Patches

© The Tiffen Company, 2007



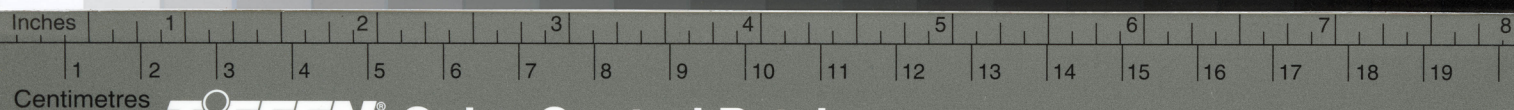
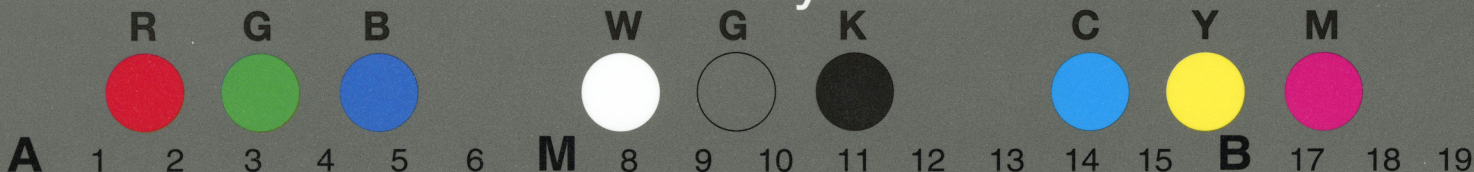
*John Hunter Beer Paper*  
*#669.05*  
*paid June 14<sup>th</sup> 1881*

12482.F.327



# TIFFEN® Gray Scale

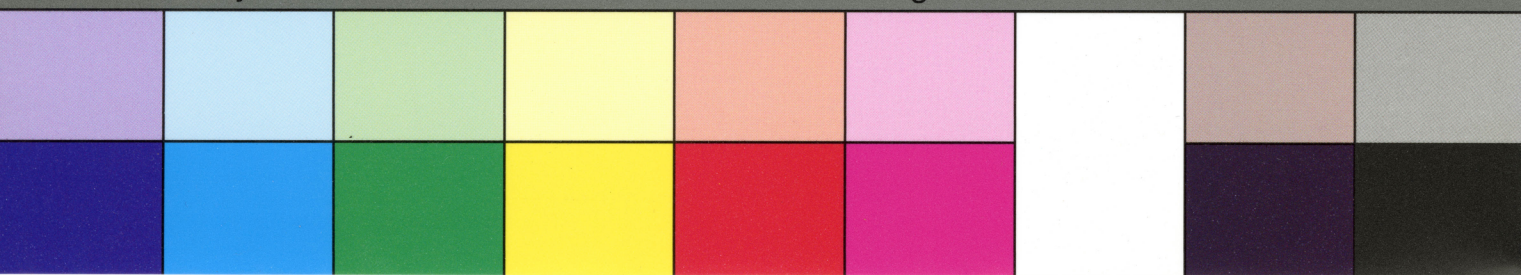
© The Tiffen Company, 2007



## TIFFEN® Color Control Patches

© The Tiffen Company, 2007

Blue Cyan Green Yellow Red Magenta White 3/Color Black



Present your bills first to the Discount Clerk, and then pay them to the Cashier, who is the only Officer or Employee of the Tax Department authorized by Law to receive payment. Before paying bills, see that no property is omitted. A penalty of 5 per cent. is imposed on all State Tax remaining unpaid on and after the first day of August, 1881.

Office of RECEIVER OF TAXES, Philadelphia, *Aug 14* 1881.  
*Mc Library Co. of Phila.* DR. for Taxes for 1881.

Page	DESCRIPTION OF PROPERTY IN		Valuation.	City Tax Rate, \$1.95.	State Tax.	Dollars.	Cts.
	<b>6 WARD.</b>						
18	139	A Front	5000	9750			
	141	" "	9000	17550			
25	62	" "	9500	18525			
	64-66	" "	12000	234			
202	139	A EWS	2200	4290			
42	10	So 2nd	6000	117			
			43700	85215			
				468			
				84747			

Poor, . . . . . 8  
 School, . . . . . 20  
 Lighting City, . . . . . 5  
 Loan, . . . . . 80  
 Highways, . . . . . 7  
 Water, . . . . . 8  
 Police, . . . . . 21  
 Markets & City Prop. 3  
 Fire, . . . . . 8  
 Prisons, . . . . . 3  
 City Commissioners, 8  
 Health, . . . . . 8  
 Ex. of Municipality, 16

\$1.95

Extract from Ordinance of Councils, Approved Dec. 8th, 1880:—That upon all taxes paid on or before the thirty-first of August, a discount at the rate of one per cent. per annum shall be allowed. If paid after the thirty first day of August, and on or before the fifteenth day of September, an addition or penalty of one half of one per cent. shall be added and made payable to the same. If paid after the fifteenth day of September, and on or before the first day of October, there shall be an addition or penalty of one per cent. If paid after the first day of October, and on or before the fifteenth day of October, there shall be an addition or penalty of one and one-half per cent. If paid after the fifteenth day of October, and on or before the first day of November, there shall be an addition or penalty of two per cent. If paid after the first day of November, and on or before the fifteenth day of November, there shall be an addition or penalty of two and one-half per cent. If paid after the fifteenth day of November, and on or before the first day of December, there shall be an addition or penalty of three per cent. If paid after the first day of December, and on or before the fifteenth day of December, there shall be an addition or penalty of three and one-half per cent. If paid after the fifteenth day of December, and on or before the first day of January, there shall be an addition or penalty of four per cent. added to and made payable upon the same.

State Tax on Pleasure Carriages, 1 per cent. State Tax on Furniture, 3 mills.  
 State Tax on Money at interest, 4 mills.

Received Payment for

JOHN HUNTER,

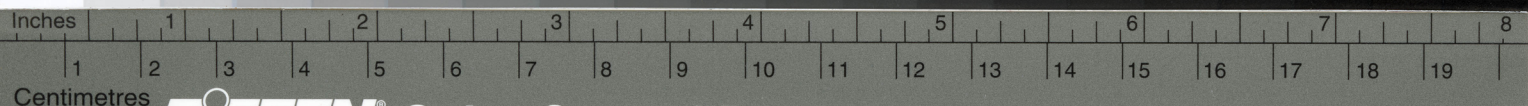
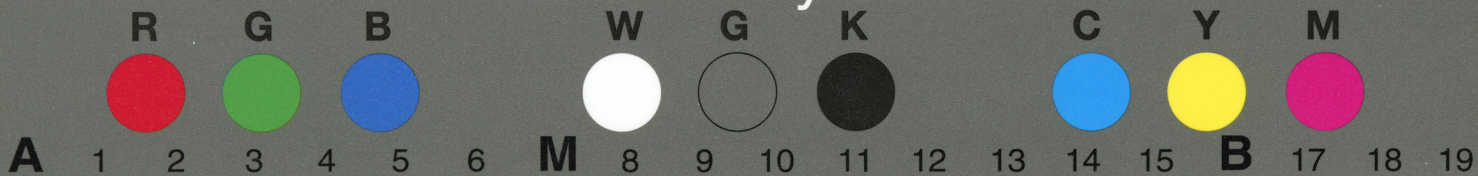
Receiver of Taxes,

*[Signature]*  
 Dep. Receiver.



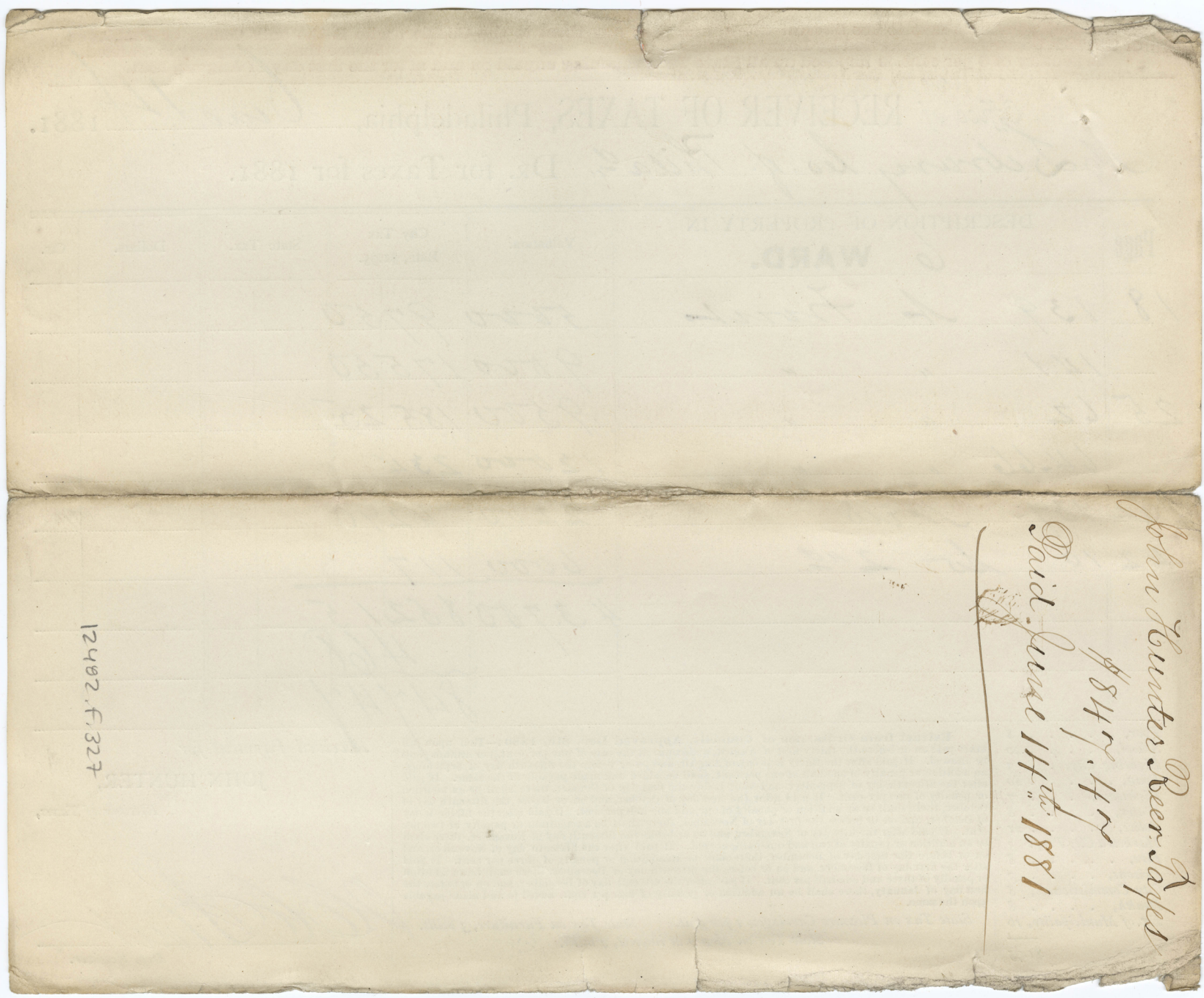
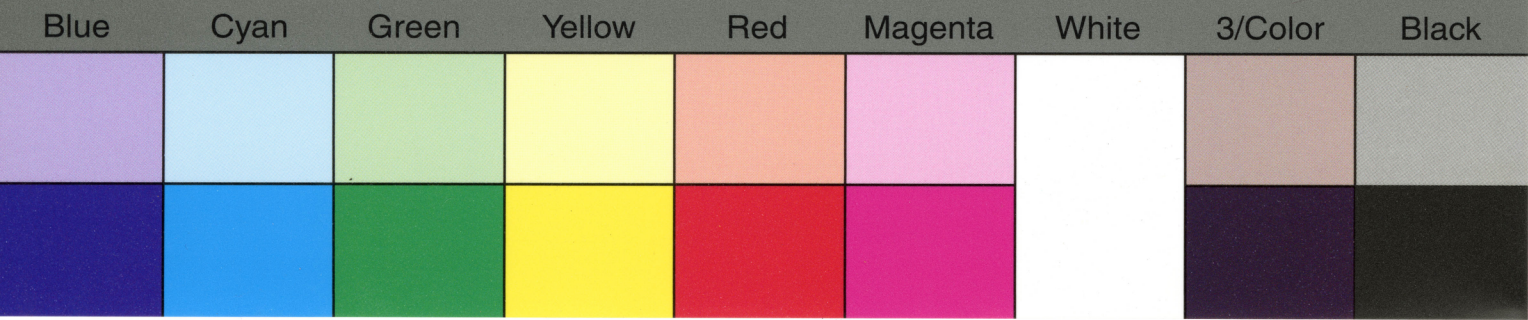
# TIFFEN® Gray Scale

© The Tiffen Company, 2007

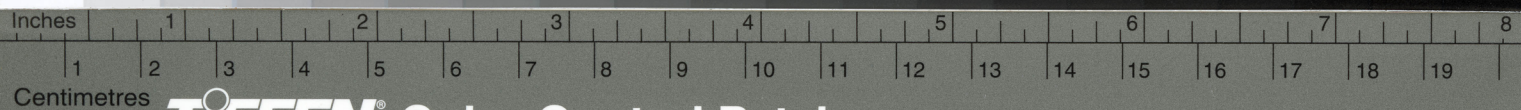
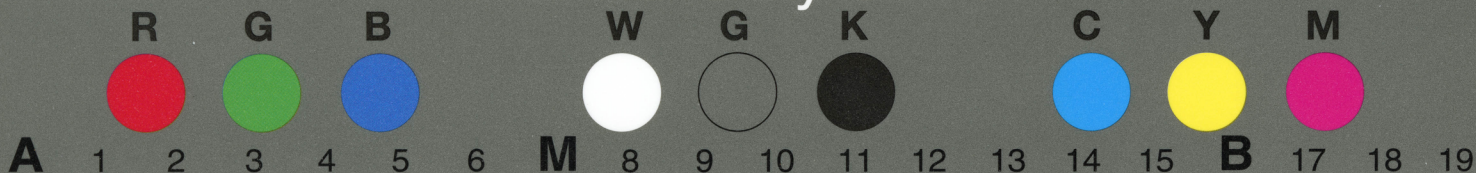


## TIFFEN® Color Control Patches

© The Tiffen Company, 2007



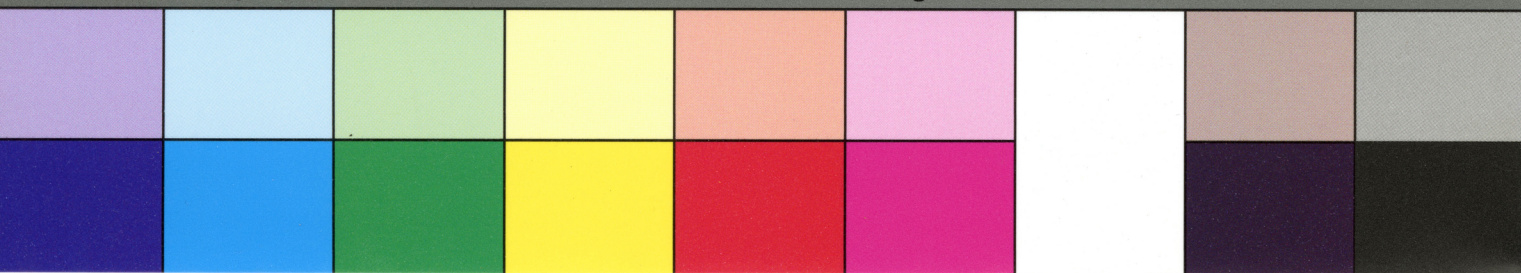




TIFFEN® Color Control Patches

© The Tiffen Company, 2007

Blue Cyan Green Yellow Red Magenta White 3/Color Black



Present your bills first to the Discount Clerk, and then pay them to the Cashier, who is the only Officer or Employee of the Tax Department authorized by Law to receive payment. Before paying bills, see that no property is omitted. A penalty of 5 per cent. is imposed on all State Tax remaining unpaid on and after the first day of August, 1881.

Office of RECEIVER OF TAXES, Philadelphia, *Nov 21* 1881.  
*Mc Philadelphia Library Co* DR. for Taxes for 1881.

Page	DESCRIPTION OF PROPERTY IN	Valuation.	City Tax Rate, \$1.95.	State Tax.	Dollars.	Cts.
	<b>6 WARD.</b>					
201	516 Ring St	85.00	165.75			
239	17. 19. 21 Penn. Av	3.000	58.50			
	25. 27. 29 " "	3.000	58.50			
33	21. 23. 25 W. 2nd St	28.000	546.00			
20	239. 241 W. Front St	11.200	218.40			
		537.00	1047.15			
			470			
					1042	45

Poor, . . . . .	8
School, . . . . .	20
Lighting City, . . . . .	5
Loan, . . . . .	80
Highways, . . . . .	7
Water, . . . . .	8
Police, . . . . .	21
Markets & City Prop. . . . .	3
Fire, . . . . .	8
Prisons, . . . . .	3
City Commissioners, . . . . .	8
Health, . . . . .	8
Ex. of Municipality, 16	

\$1.95

Extract from Ordinance of Councils, Approved Dec. 8th, 1880:—That upon all taxes paid on or before the thirty-first of August, a discount at the rate of one per cent. per annum shall be allowed. If paid after the thirty-first day of August, and on or before the fifteenth day of September, an addition or penalty of one half of one per cent. shall be added and made payable to the same. If paid after the fifteenth day of September, and on or before the first day of October, there shall be an addition or penalty of one per cent. If paid after the first day of October, and on or before the fifteenth day of October, there shall be an addition or penalty of one and one-half per cent. If paid after the fifteenth day of October, and on or before the first day of November, there shall be an addition or penalty of two per cent. If paid after the first day of November, and on or before the fifteenth day of November, there shall be an addition or penalty of two and one-half per cent. If paid after the fifteenth day of November, and on or before the first day of December, there shall be an addition or penalty of three per cent. If paid after the first day of December, and on or before the fifteenth day of December, there shall be an addition or penalty of three and one-half per cent. If paid after the fifteenth day of December, and on or before the first day of January, there shall be an addition or penalty of four per cent. added to and made payable upon the same.

State Tax on Pleasure Carriages, 1 per cent. State Tax on Furniture, 3 mills.  
 State Tax on Money at interest, 4 mills.

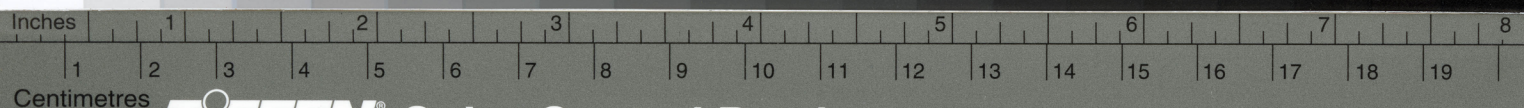
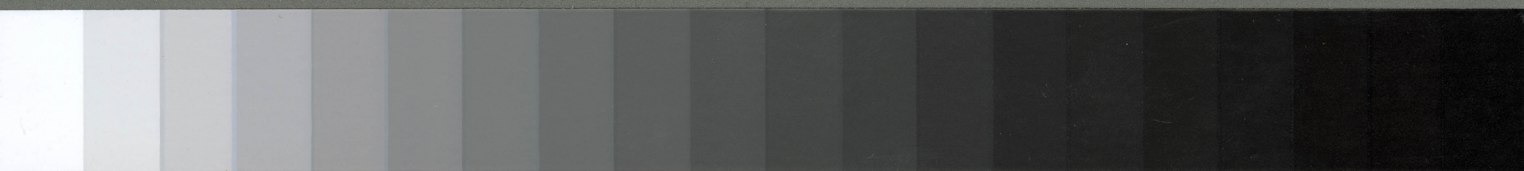
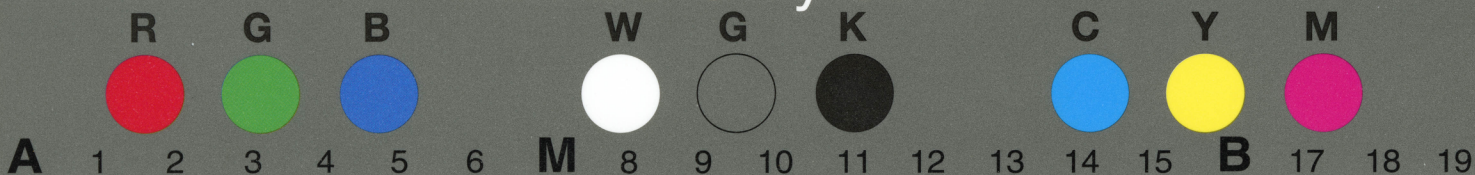
Received Payment for  
 JOHN HUNTER,  
 Receiver of Taxes,

*[Signature]*  
 Dep. Receiver.



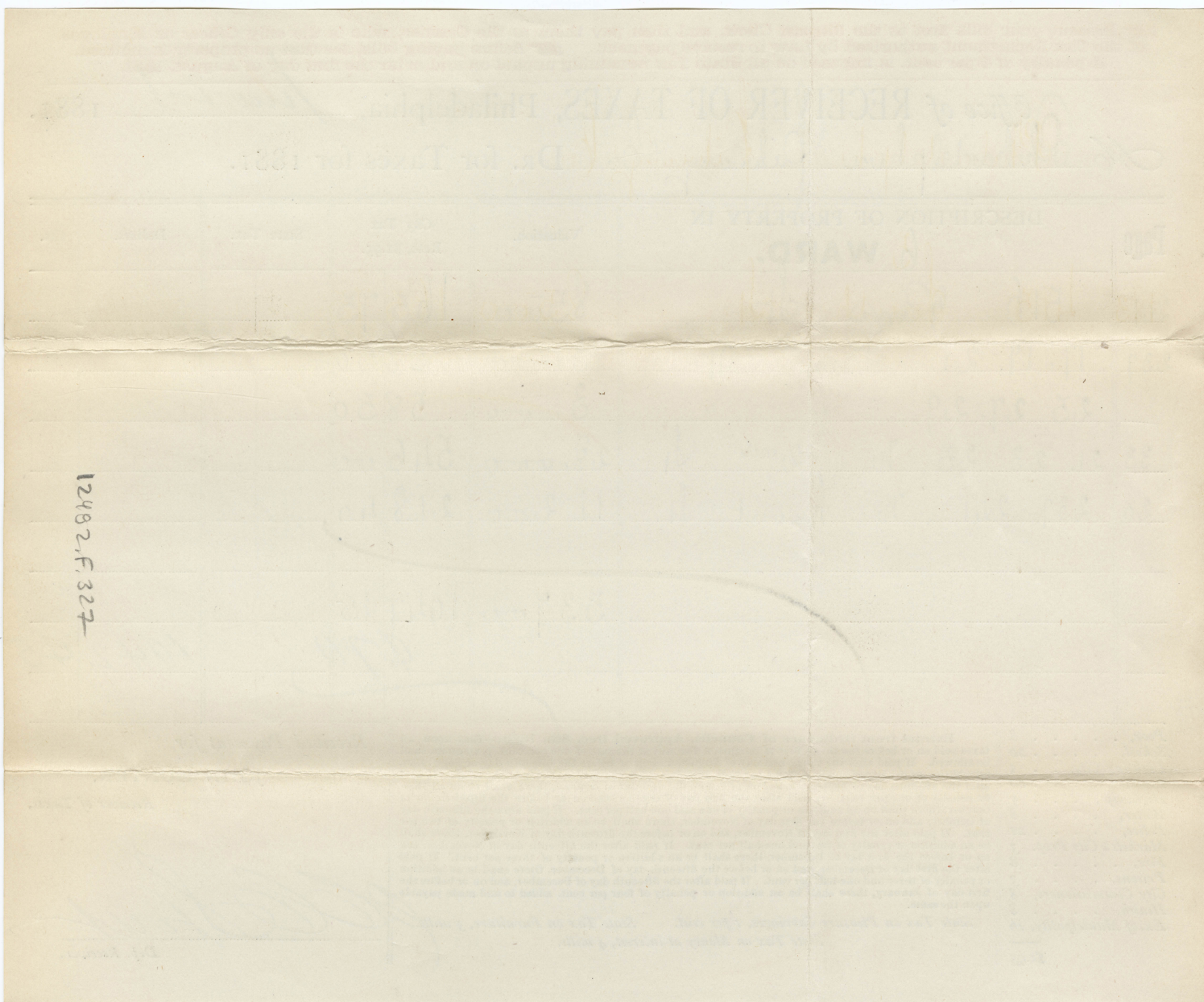
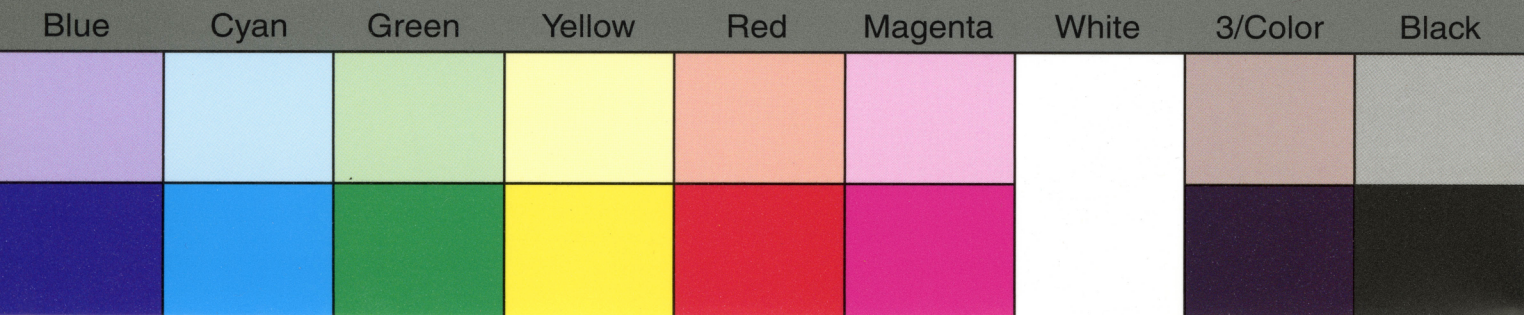
# TIFFEN® Gray Scale

© The Tiffen Company, 2007



## TIFFEN® Color Control Patches

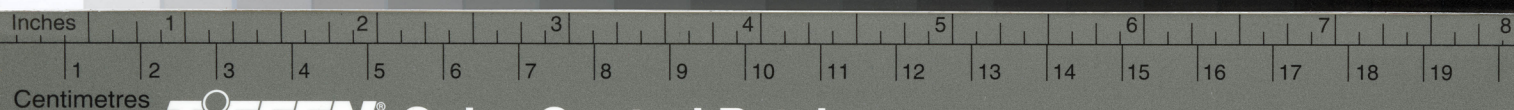
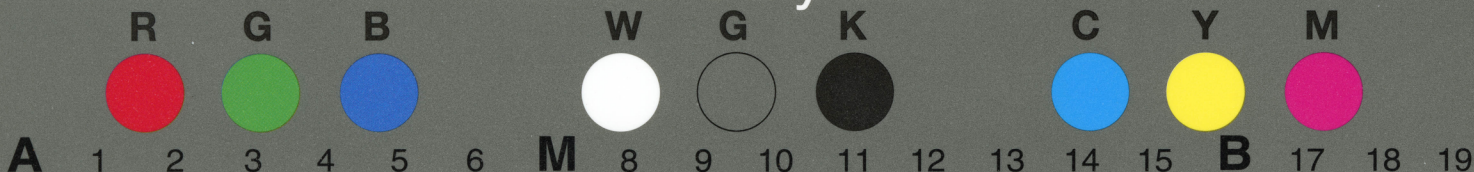
© The Tiffen Company, 2007





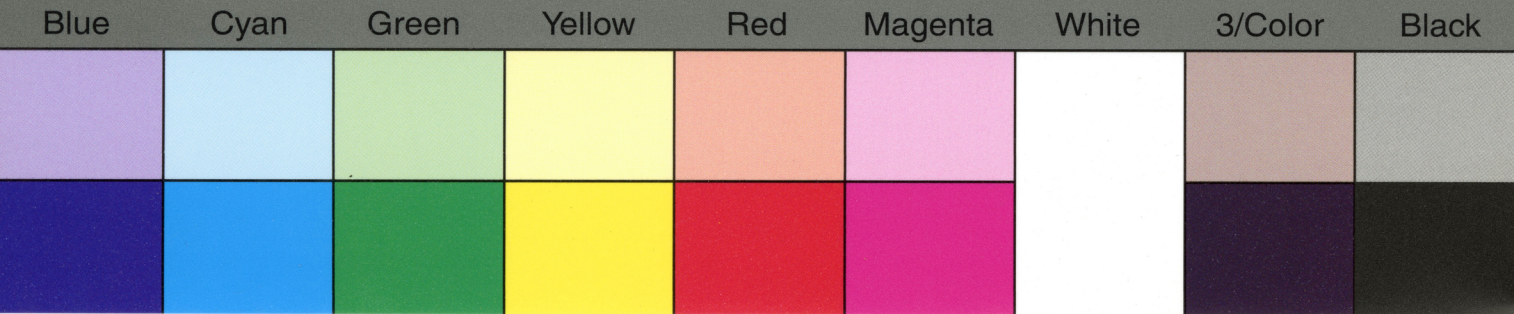
# TIFFEN® Gray Scale

© The Tiffen Company, 2007



## TIFFEN® Color Control Patches

© The Tiffen Company, 2007



Present your bills first to the Discount Clerk, and then pay them to the Cashier, who is the only Officer or Employee of the Tax Department authorized by Law to receive payment. Before paying bills, see that no property is omitted. A penalty of 5 per cent. is imposed on all State Tax remaining unpaid on and after the first day of August, 1881.

Office of **RECEIVER OF TAXES**, Philadelphia, *Nov 21* 1881.  
*Mc Philadelphia Library* to DR. for Taxes for 1881.

Page	DESCRIPTION OF PROPERTY IN	Valuation.	City Tax Rate, \$1.95.	State Tax.	Dollars.	Cts.
183	5 WARD, 415 South St.	8500	165 75 74			
			165 01			

Poor, . . . . .	8
School, . . . . .	20
Lighting City, . . . . .	5
Loan, . . . . .	80
Highways, . . . . .	7
Water, . . . . .	8
Police, . . . . .	21
Markets & City Prop. . . . .	3
Fire, . . . . .	8
Prisons, . . . . .	3
City Commissioners, . . . . .	8
Health, . . . . .	8
Ex. of Municipality, 16	

\$1.95

**Extract from Ordinance of Councils, Approved Dec. 8th, 1880:**—That upon all taxes paid on or before the thirty-first of August, a discount at the rate of one per cent. per annum shall be allowed. If paid after the thirty-first day of August, and on or before the fifteenth day of September, an addition or penalty of one half of one per cent. shall be added and made payable to the same. If paid after the fifteenth day of September, and on or before the first day of October, there shall be an addition or penalty of one per cent. If paid after the first day of October, and on or before the fifteenth day of October, there shall be an addition or penalty of one and one-half per cent. If paid after the fifteenth day of October, and on or before the first day of November, there shall be an addition or penalty of two per cent. If paid after the first day of November, and on or before the fifteenth day of November, there shall be an addition or penalty of two and one-half per cent. If paid after the fifteenth day of November, and on or before the first day of December, there shall be an addition or penalty of three per cent. If paid after the first day of December, and on or before the fifteenth day of December, there shall be an addition or penalty of three and one-half per cent. If paid after the fifteenth day of December, and on or before the first day of January, there shall be an addition or penalty of four per cent. added to and made payable upon the same.

State Tax on Pleasure Carriages, 1 per cent. State Tax on Furniture, 3 mills.  
 State Tax on Money at interest, 4 mills.

Received Payment for

**JOHN HUNTER,**

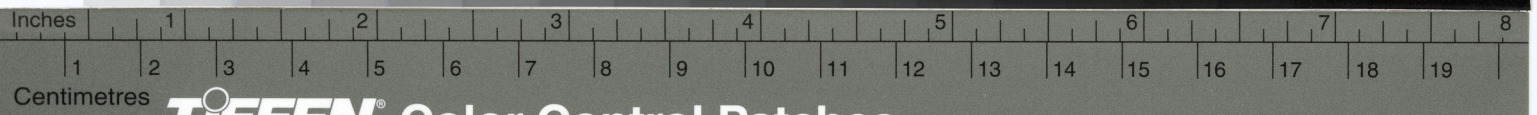
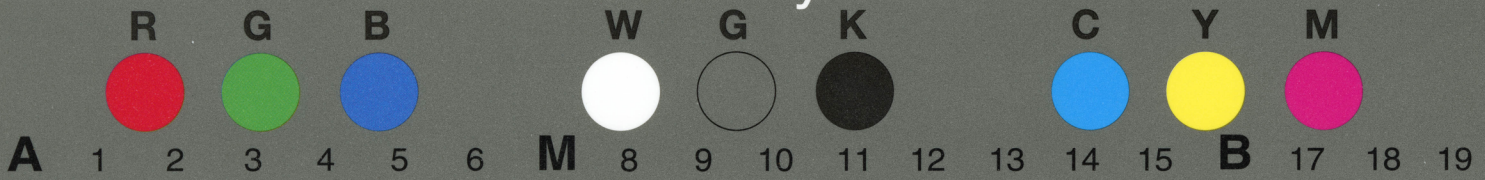
Receiver of Taxes,

*[Signature]*  
 Dep. Receiver.



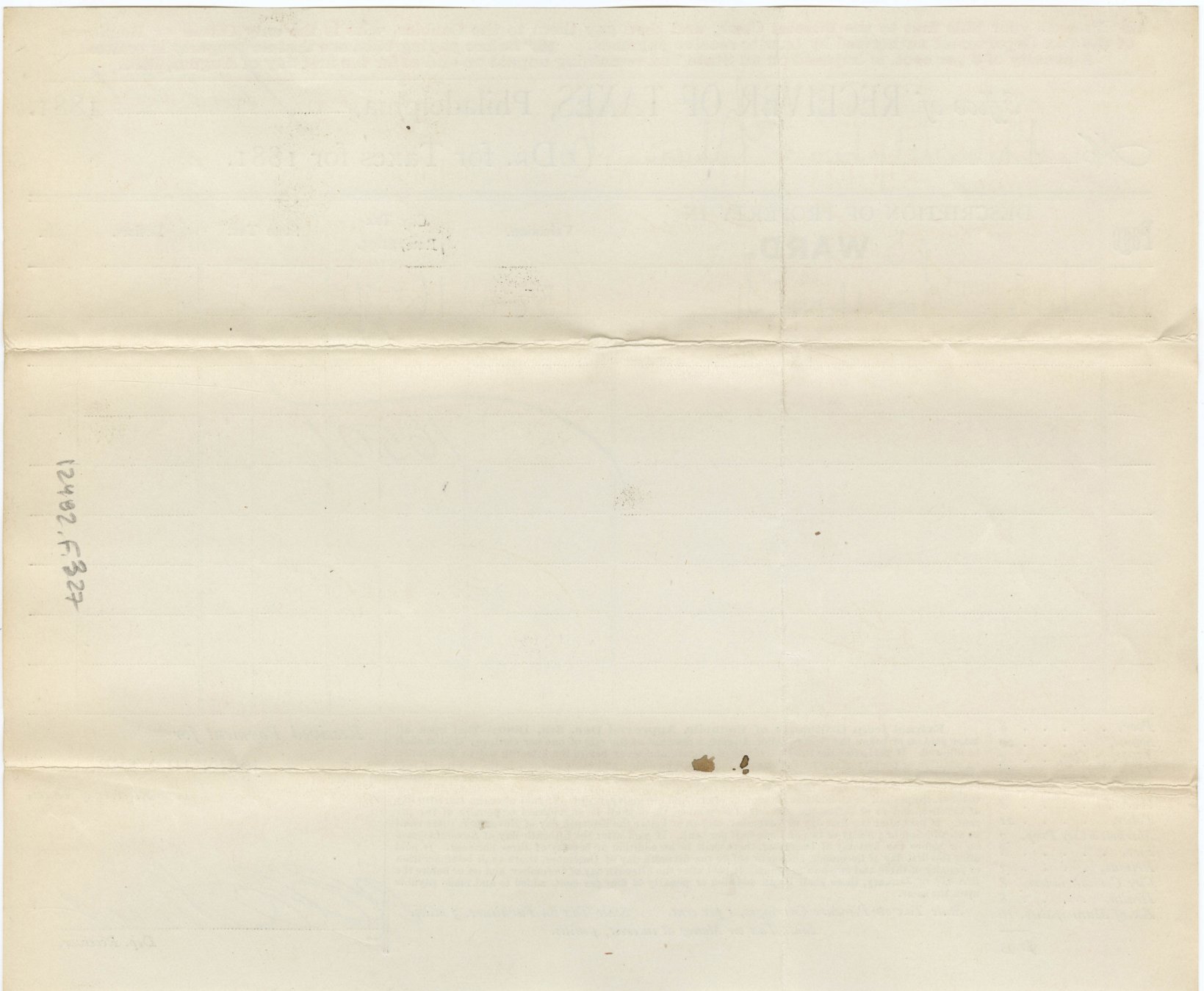
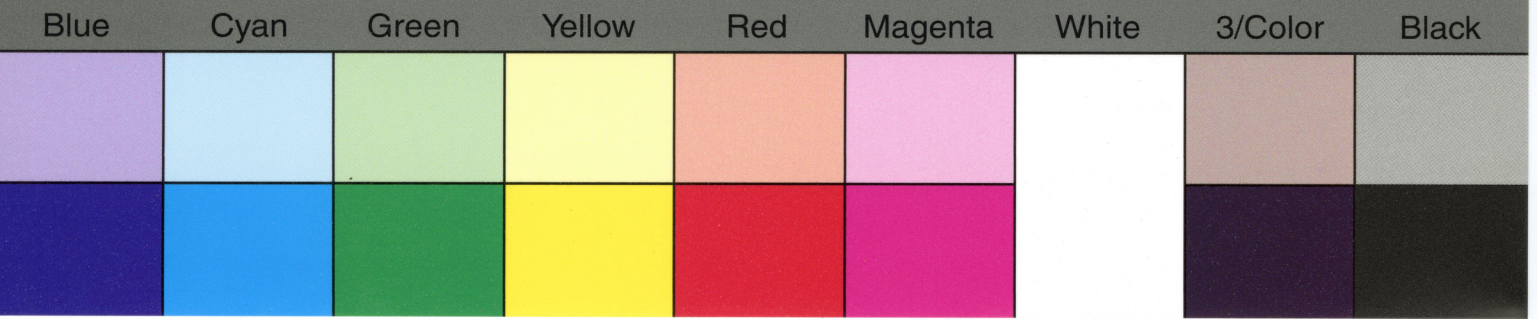
# TIFFEN® Gray Scale

© The Tiffen Company, 2007

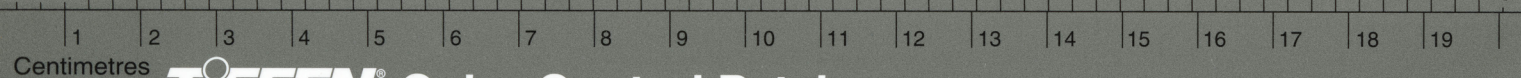
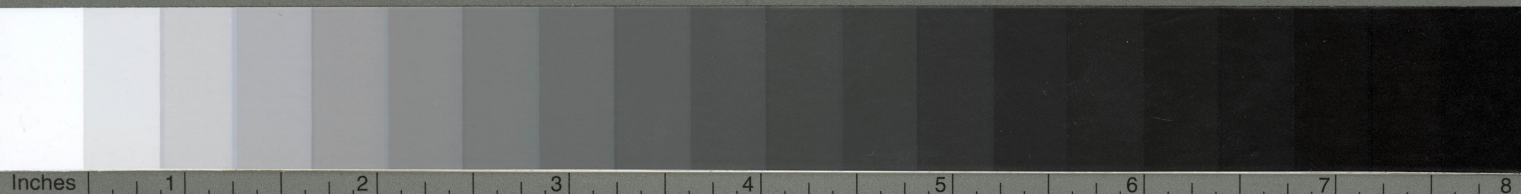
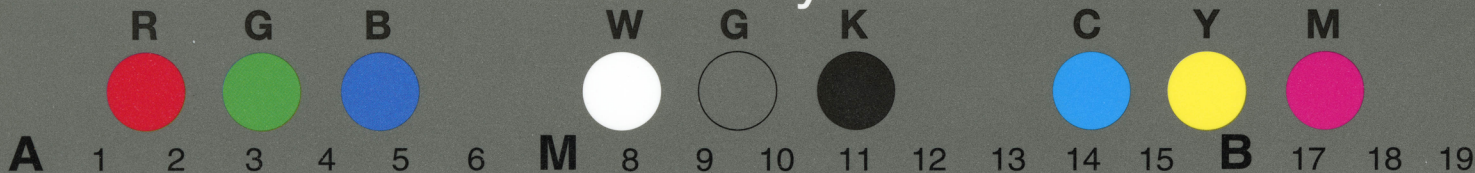
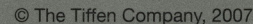


## TIFFEN® Color Control Patches

© The Tiffen Company, 2007

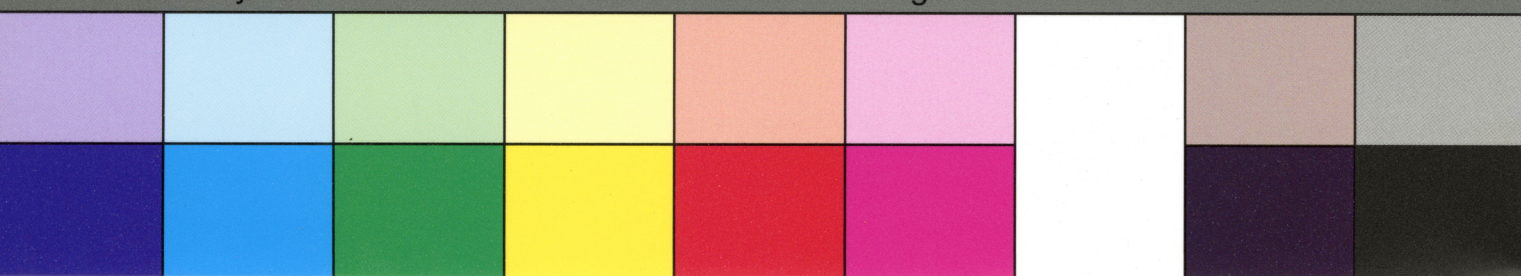






© The Tiffen Company, 2007

Blue      Cyan      Green      Yellow      Red      Magenta      White      3/Color      Black



**Present your bills first to the Discount Clerk, and then pay them to the Cashier, who is the only Officer or Employee of the Tax Department authorized by Law to receive payment. Before paying bills, see that no property is omitted. A penalty of 5 per cent. is imposed on all State Tax remaining unpaid on and after the first day of August, 1881.**

Office of RECEIVER OF TAXES, Philadelphia, ..... 1881.

*Ac Library. Co. of Phila* DR. for Taxes for 1881.

Page	DESCRIPTION OF PROPERTY IN	Valuation.	City Tax Rate, \$1.95.	State Tax.	Dollars.	Cts.
	<b>12 WARD.</b>					
103	443 Magnolia	1400	2730			
	445 do	1400	2730			
		<u>2800</u>	<u>5460</u>			
			24			
			5436			
	1436 54					

Poor, . . . . .	8
School, . . . . .	20
Lighting City, . . . . .	5
Loan, . . . . .	80
Highways, . . . . .	7
Water, . . . . .	8
Police, . . . . .	21
Markets & City Prop. . . . .	3
Fire, . . . . .	8
Prisons, . . . . .	3
City Commissioners, . . . . .	8
Health, . . . . .	8
Ex. of Municipality, 16	

**Extract from Ordinance of Councils, Approved Dec. 8th, 1880:**—That upon all taxes paid on or before the thirty-first of August, a discount at the rate of one per cent. per annum shall be allowed. If paid after the thirty first day of August, and on or before the fifteenth day of September, an addition or penalty of one half of one per cent. shall be added and made payable to the same. If paid after the fifteenth day of September, and on or before the first day of October, there shall be an addition or penalty of one per cent. If paid after the first day of October, and on or before the fifteenth day of October, there shall be an addition or penalty of one and one-half per cent. If paid after the fifteenth day of October, and on or before the first day of November, there shall be an addition or penalty of two per cent. If paid after the first day of November, and on or before the fifteenth day of November, there shall be an addition or penalty of two and one-half per cent. If paid after the fifteenth day of November, and on or before the first day of December, there shall be an addition or penalty of three per cent. If paid after the first day of December, and on or before the fifteenth day of December, there shall be an addition or penalty of three and one-half per cent. If paid after the fifteenth day of December, and on or before the first day of January, there shall be an addition or penalty of four per cent. added to and made payable upon the same.

*State Tax on Pleasure Carriages, 1 per cent.      State Tax on Furniture, 3 mills.*  
*State Tax on Money at interest, 4 mills.*

*Received Payment for*

JOHN HUNTER,

Receiver of Taxes,

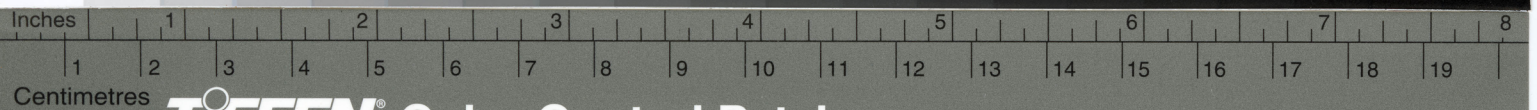
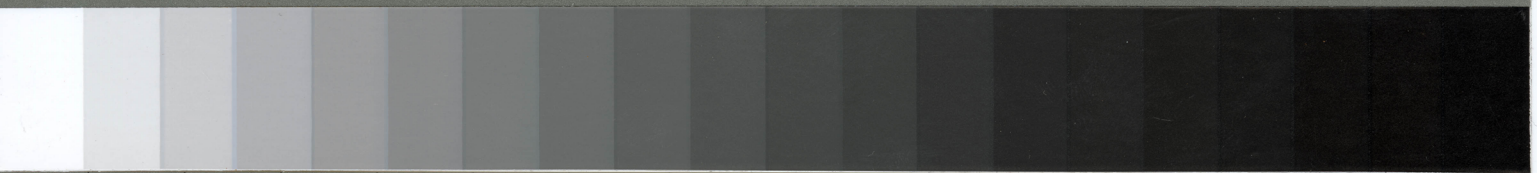
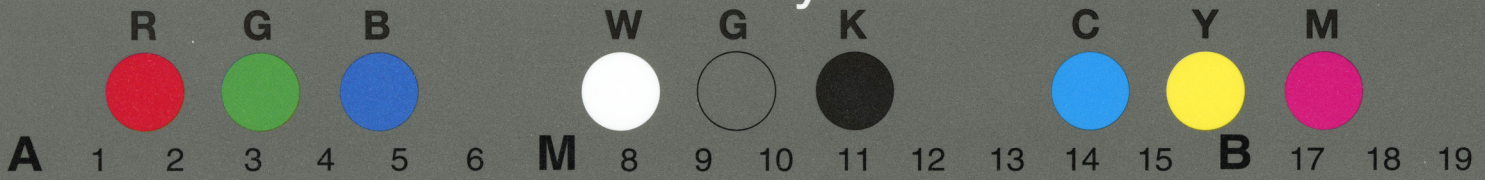
and  
on  
the  
ble

*W. C. Spruill*  
Dep. Receiver.



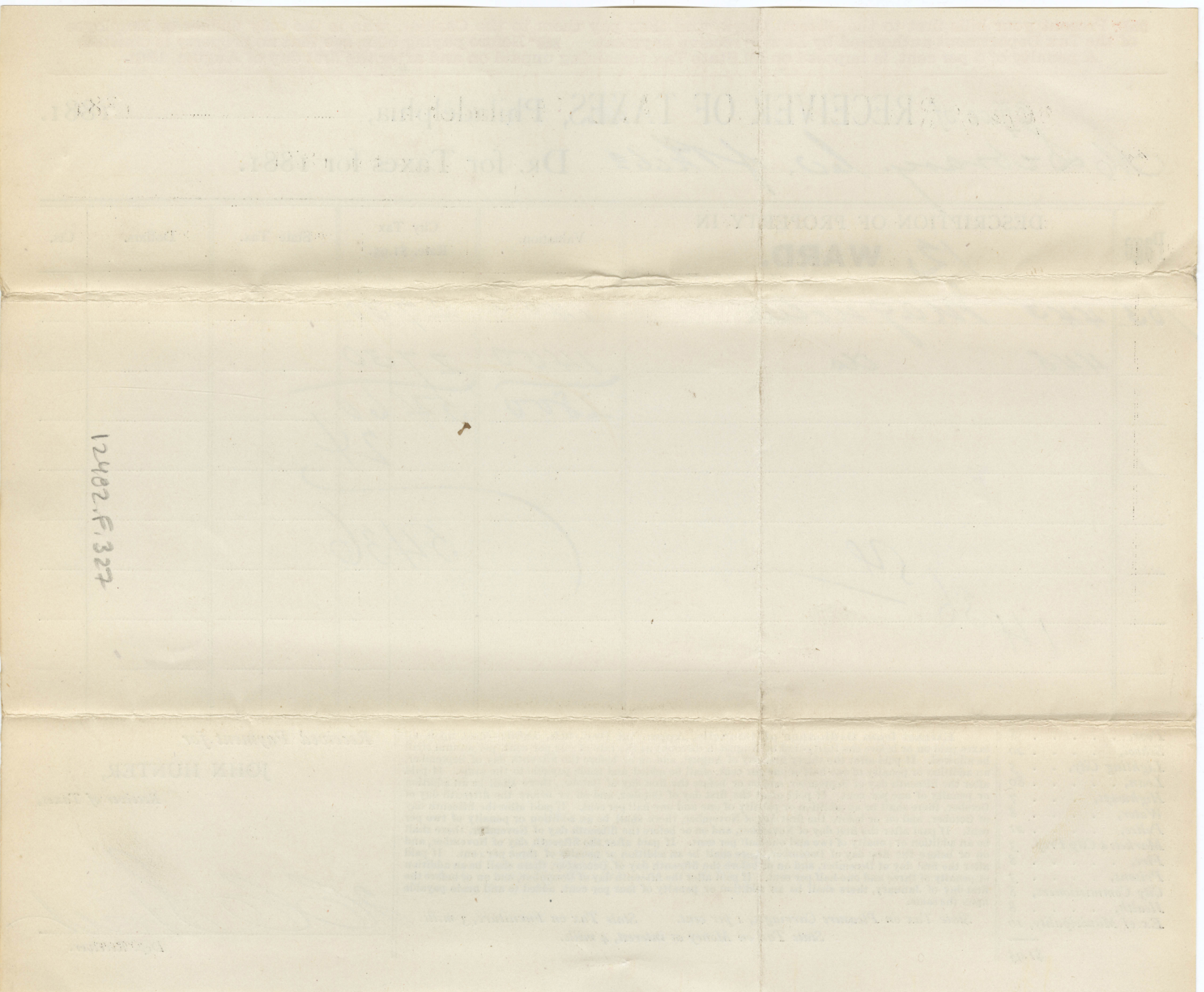
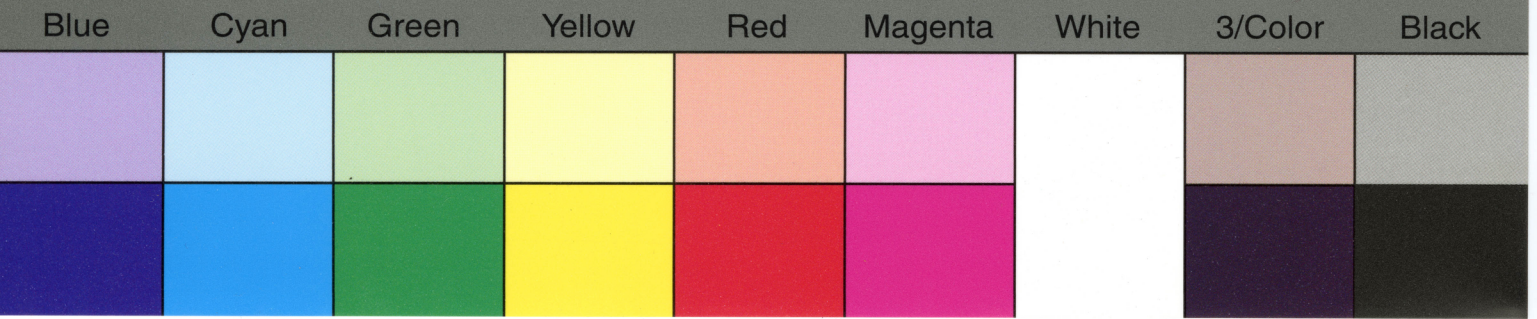
# TIFFEN® Gray Scale

© The Tiffen Company, 2007

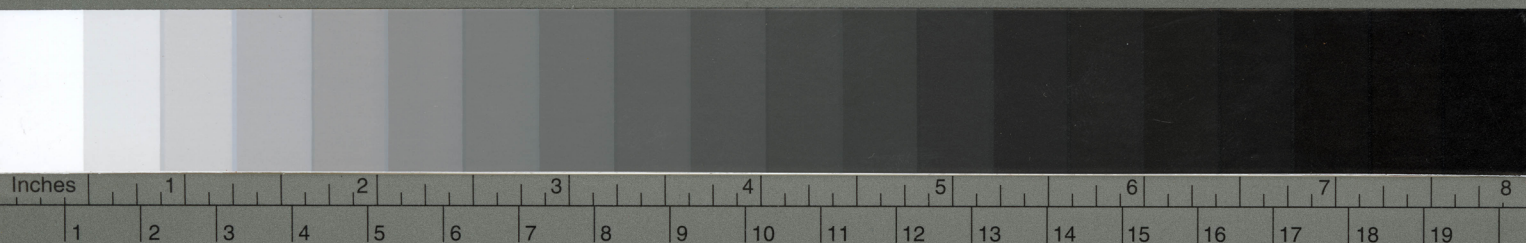
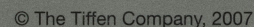


## TIFFEN® Color Control Patches

© The Tiffen Company, 2007







© The Tiffen Company, 2007

A penalty of 5 per cent. is imposed on all State Tax remaining unpaid on and after the first day of August, 1881.

*Ms. Library Co of Philad* DR. for Taxes for 1881.

WARD.

Cts.

90259 N 9° E

9000 17550  
78

17492

**Extract from Ordinance of Councils, Approved Dec. 8th, 1880:**—That upon all taxes paid on or before the thirty-first of August, a discount at the rate of one per cent. per annum shall be allowed. If paid after the thirty first day of August, and on or before the fifteenth day of September, an addition or penalty of one half of one per cent. shall be added and made payable to the same. If paid after the fifteenth day of September, and on or before the first day of October, there shall be an addition or penalty of one per cent. If paid after the first day of October, and on or before the fifteenth day of October, there shall be an addition or penalty of one and one-half per cent. If paid after the fifteenth day of October, and on or before the first day of November, there shall be an addition or penalty of two per cent. If paid after the first day of November, and on or before the fifteenth day of November, there shall be an addition or penalty of two and one-half per cent. If paid after the fifteenth day of November, and on or before the first day of December, there shall be an addition or penalty of three per cent. If paid after the first day of December, and on or before the fifteenth day of December, there shall be an addition or penalty of three and one-half per cent. If paid after the fifteenth day of December, and on or before the first day of January, there shall be an addition or penalty of four per cent. added to and made payable upon the same.

\$1.95

State Tax on Pleasure Carriages, 1 per cent.      State Tax on Furniture, 3 mills  
State Tax on Money at interest, 4 mills.

Receiver of Taxes,

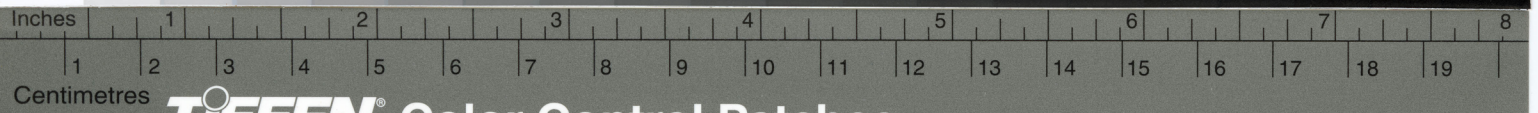
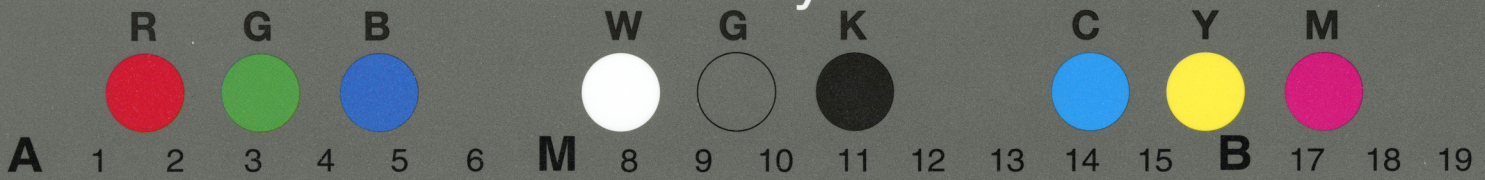
If paid  
addition  
fore the  
payable

W. C. Sproul  
Dep. Receiver.



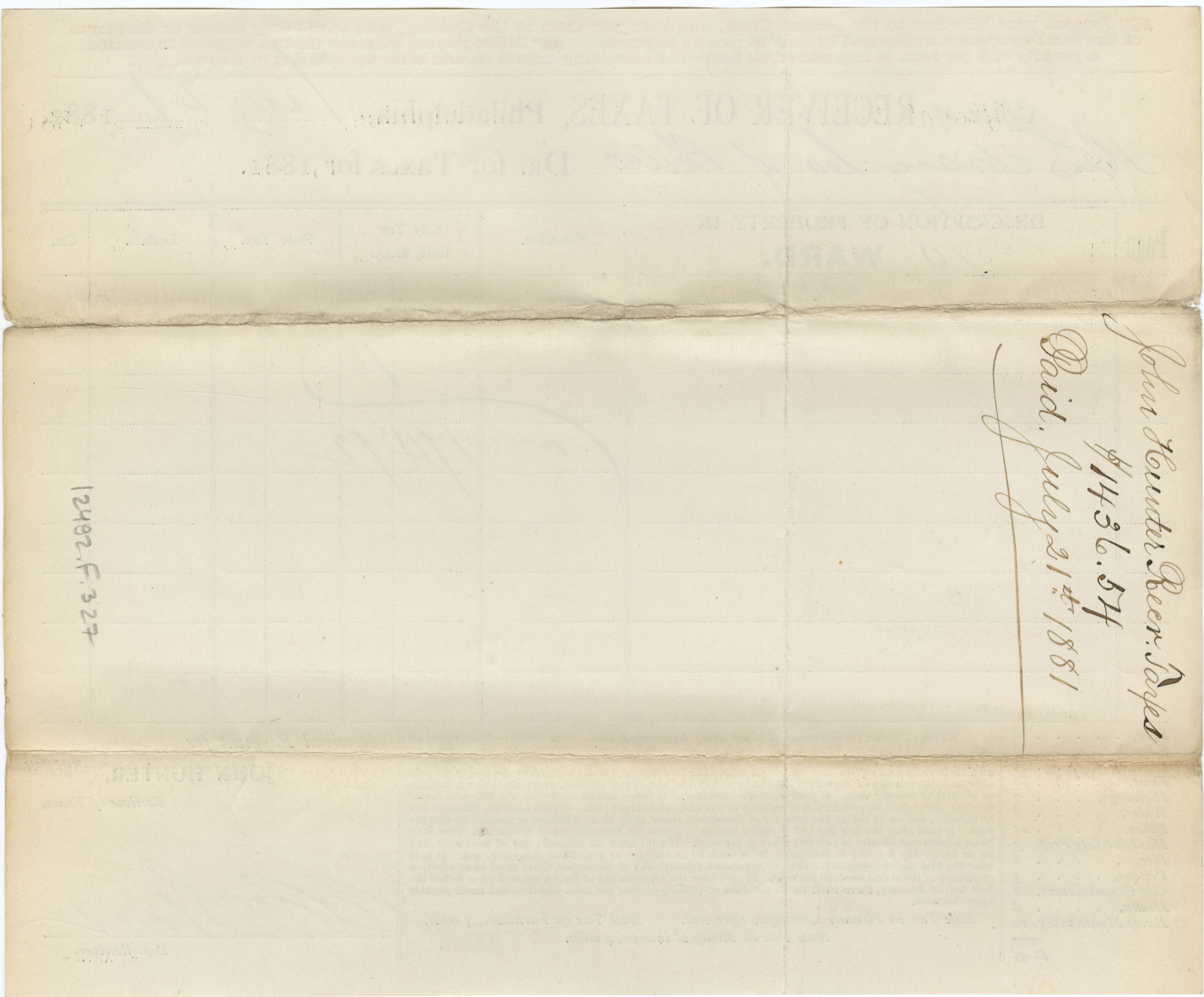
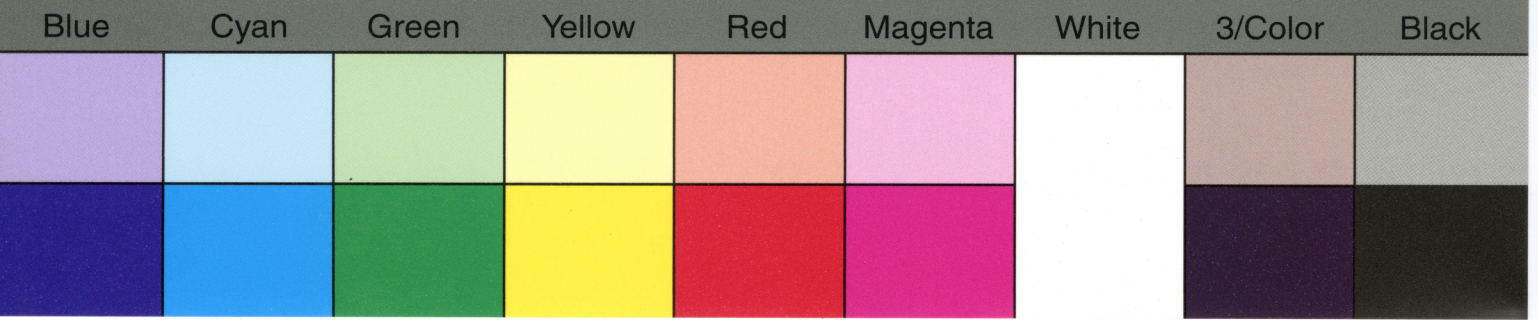
# TIFFEN® Gray Scale

© The Tiffen Company, 2007

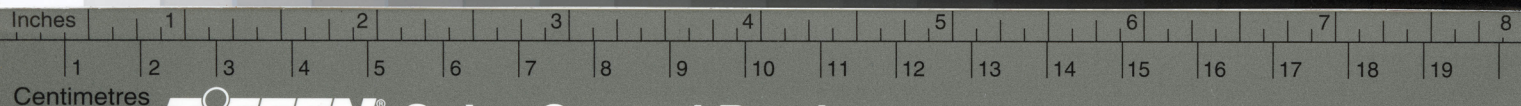
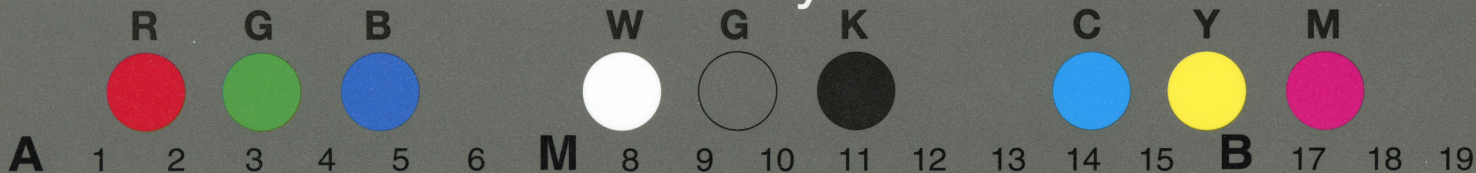


## TIFFEN® Color Control Patches

© The Tiffen Company, 2007

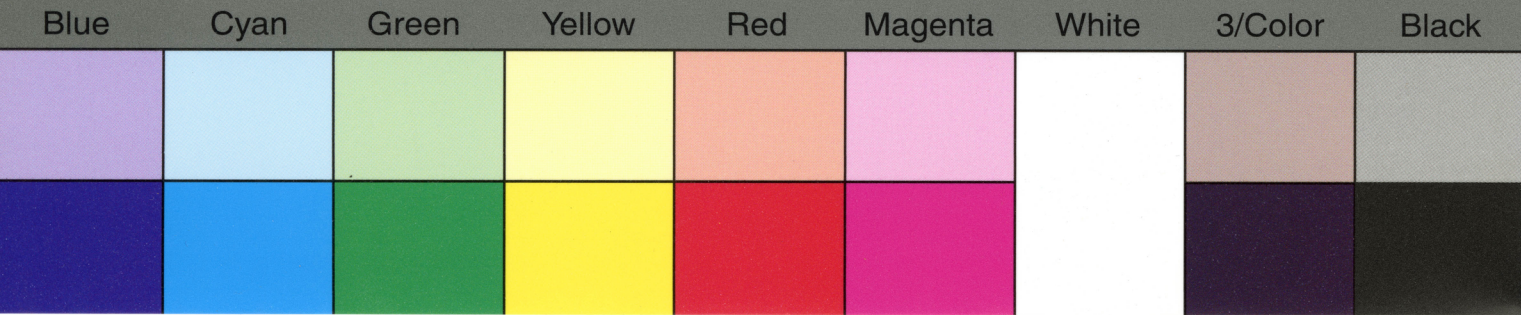






## TIFFEN® Color Control Patches

© The Tiffen Company, 2007



Present your bills first to the Discount Clerk, and then pay them to the Cashier, who is the only Officer or Employee of the Tax Department authorized by Law to receive payment. Before paying bills, see that no property is omitted. A penalty of 5 per cent. is imposed on all State Tax remaining unpaid on and after the first day of August, 1881.

Office of **RECEIVER OF TAXES**, Philadelphia, 1881.  
*Dr. for Taxes for 1881.*

Page	DESCRIPTION OF PROPERTY IN	Valuation.	City Tax Rate, \$1.95.	State Tax.	Dollars.	Cts.
	<b>WARD.</b>					
149	614 Market St	23.000	448 50			
	616 " "	27.000	526 50			
		50.000	975 00			
			341			
			971 59			

Poor, . . . . .	8
School, . . . . .	20
Lighting City, . . . . .	5
Loan, . . . . .	80
Highways, . . . . .	7
Water, . . . . .	8
Police, . . . . .	21
Markets & City Prop. . . . .	3
Fire, . . . . .	8
Prisons, . . . . .	3
City Commissioners, . . . . .	8
Health, . . . . .	8
Ex. of Municipality, 16	

\$1.95

Extract from Ordinance of Councils, Approved Dec. 8th, 1880:—That upon all taxes paid on or before the thirty-first of August, a discount at the rate of one per cent. per annum shall be allowed. If paid after the thirty first day of August, and on or before the fifteenth day of September, an addition or penalty of one half of one per cent. shall be added and made payable to the same. If paid after the fifteenth day of September, and on or before the first day of October, there shall be an addition or penalty of one per cent. If paid after the first day of October, and on or before the fifteenth day of October, there shall be an addition or penalty of one and one-half per cent. If paid after the fifteenth day of October, and on or before the first day of November, there shall be an addition or penalty of two per cent. If paid after the first day of November, and on or before the fifteenth day of November, there shall be an addition or penalty of two and one-half per cent. If paid after the fifteenth day of November, and on or before the first day of December, there shall be an addition or penalty of three per cent. If paid after the first day of December, and on or before the fifteenth day of December, there shall be an addition or penalty of three and one-half per cent. If paid after the fifteenth day of December, and on or before the first day of January, there shall be an addition or penalty of four per cent. added to and made payable upon the same.

State Tax on Pleasure Carriages, 1 per cent. State Tax on Furniture, 3 mills.  
 State Tax on Money at interest, 4 mills.

Received Payment for

**JOHN HUNTER,**

Receiver of Taxes,

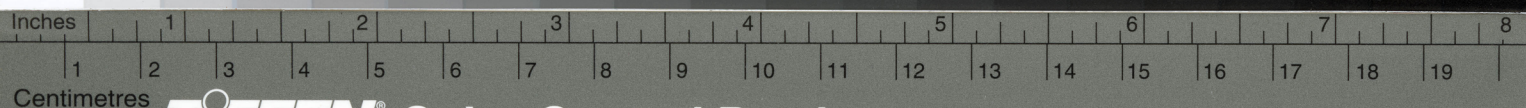
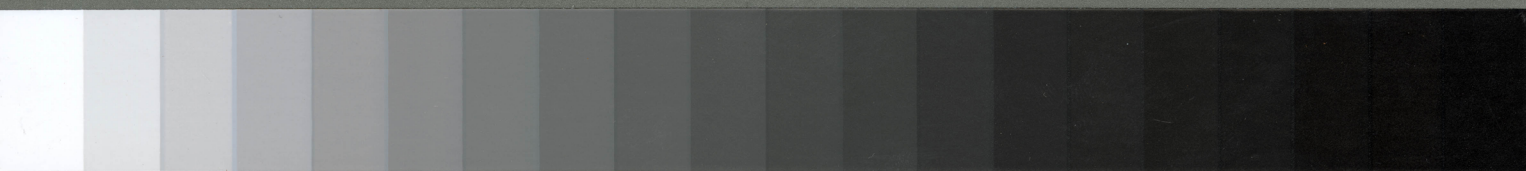
*[Signature]*  
 Dep. Receiver.



# TIFFEN® Gray Scale

© The Tiffen Company, 2007

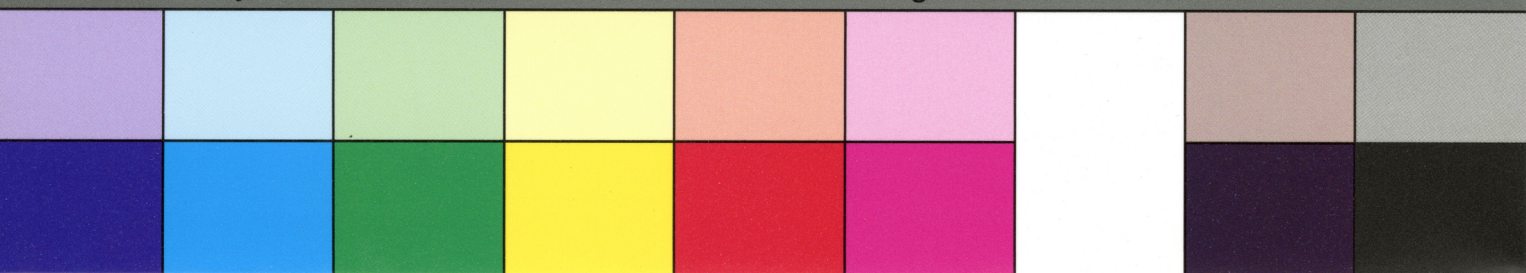
R G B W G K C Y M  
A 1 2 3 4 5 6 M 8 9 10 11 12 13 14 15 B 17 18 19



## TIFFEN® Color Control Patches

© The Tiffen Company, 2007

Blue Cyan Green Yellow Red Magenta White 3/Color Black



John Hunter  
Recr. of Paprs.  
#971.59  
Paid. Aug. 29<sup>th</sup> 1881

12492.F-327