

Museum Feb. 2^d. 1797.

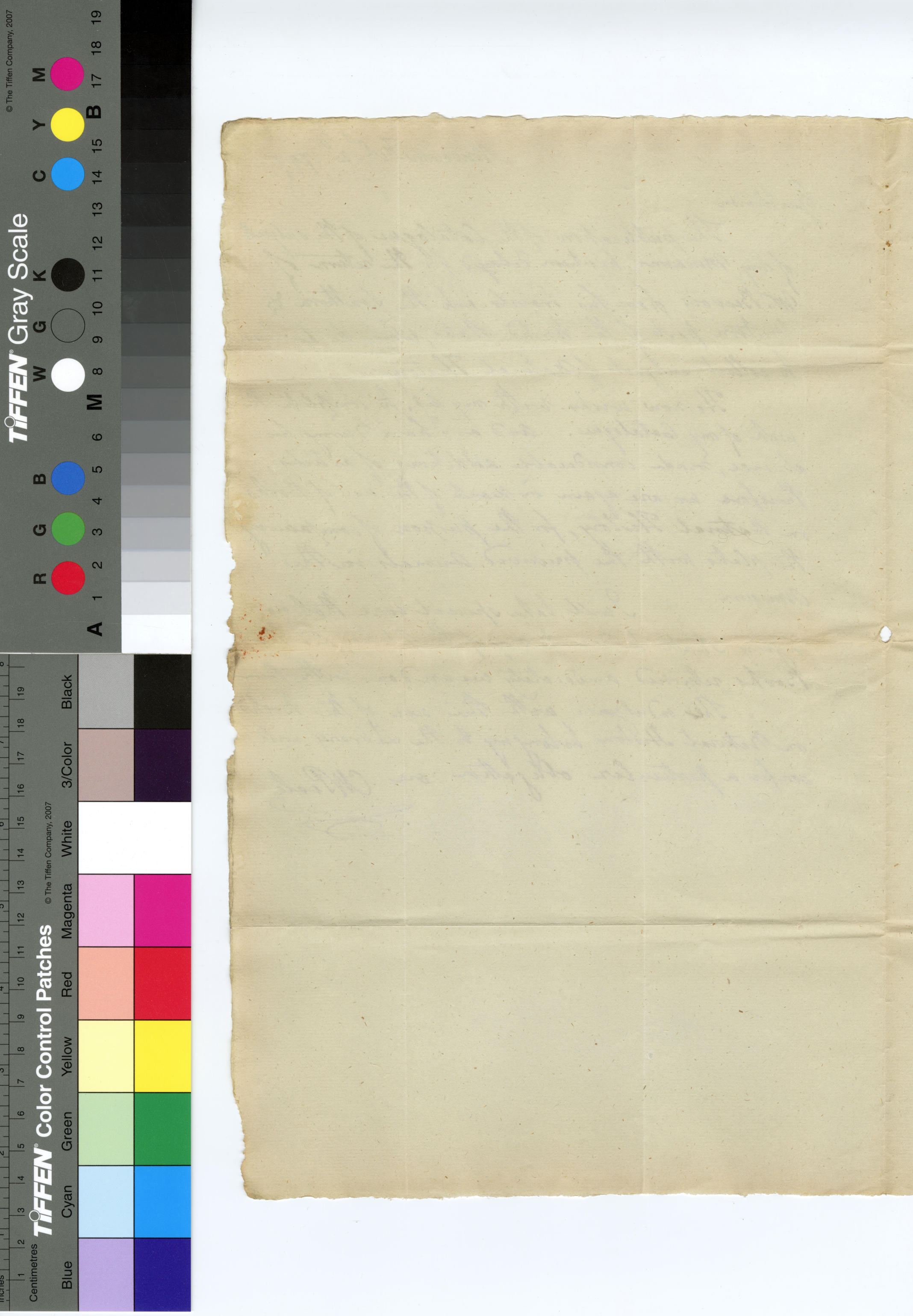
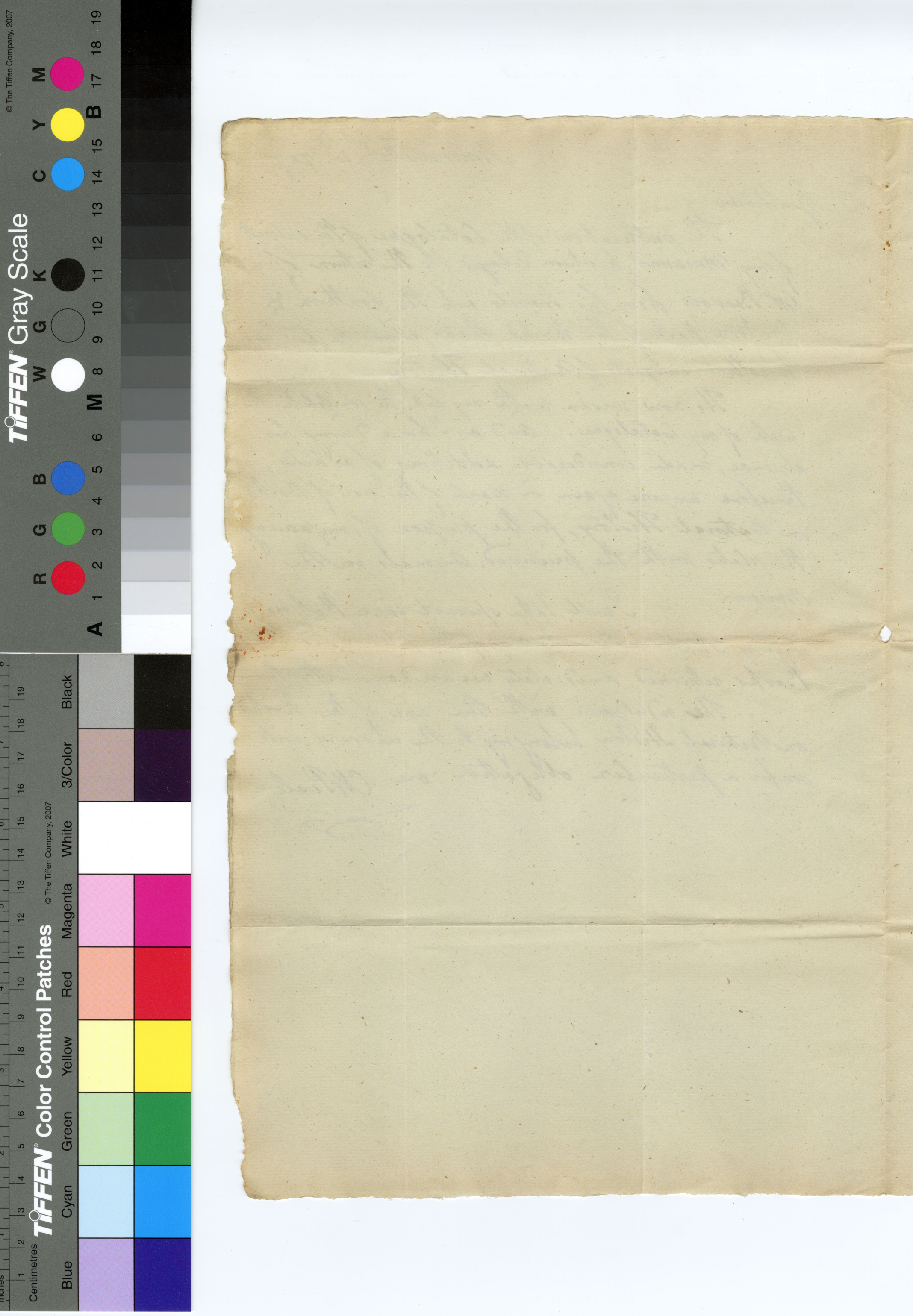
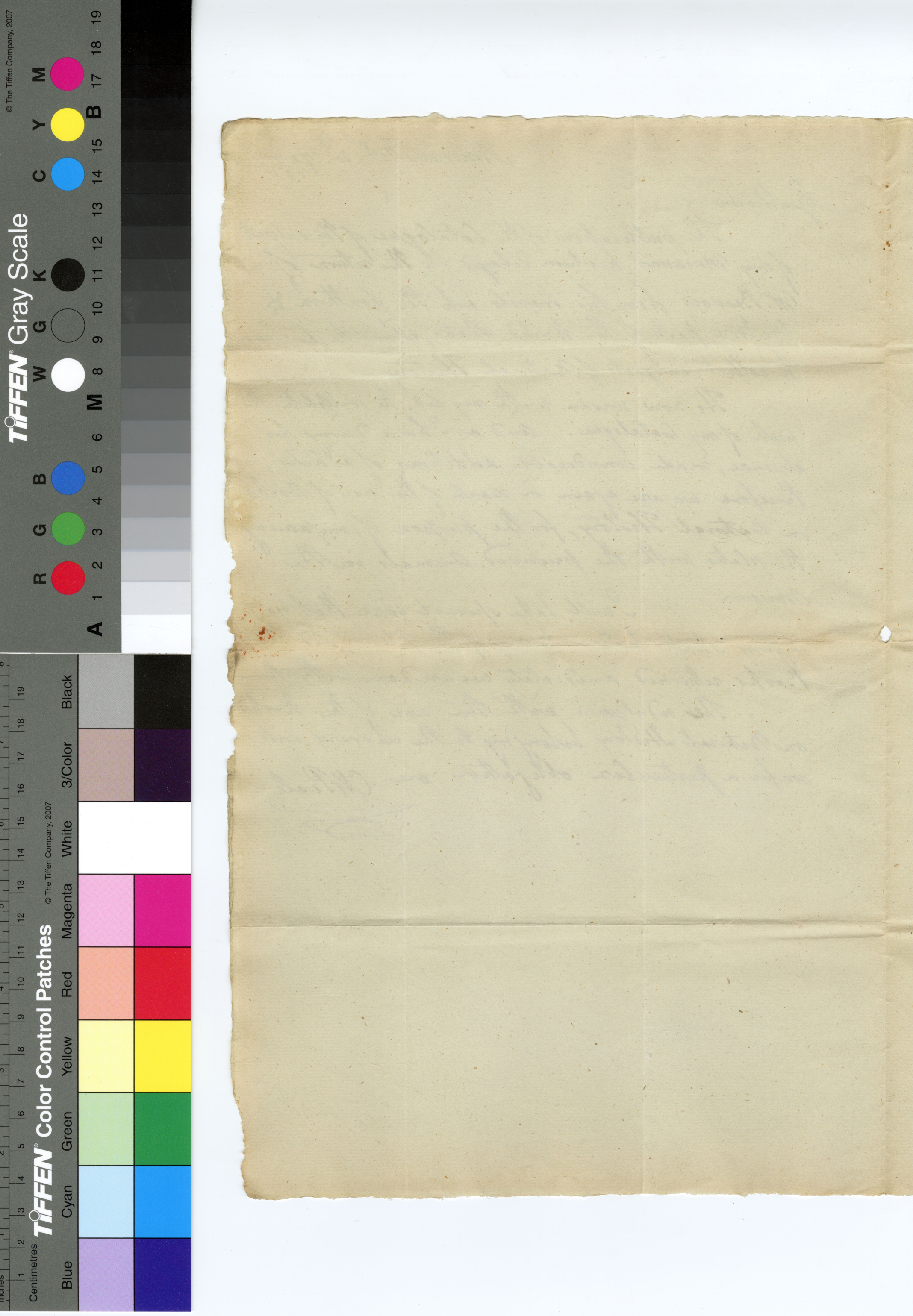
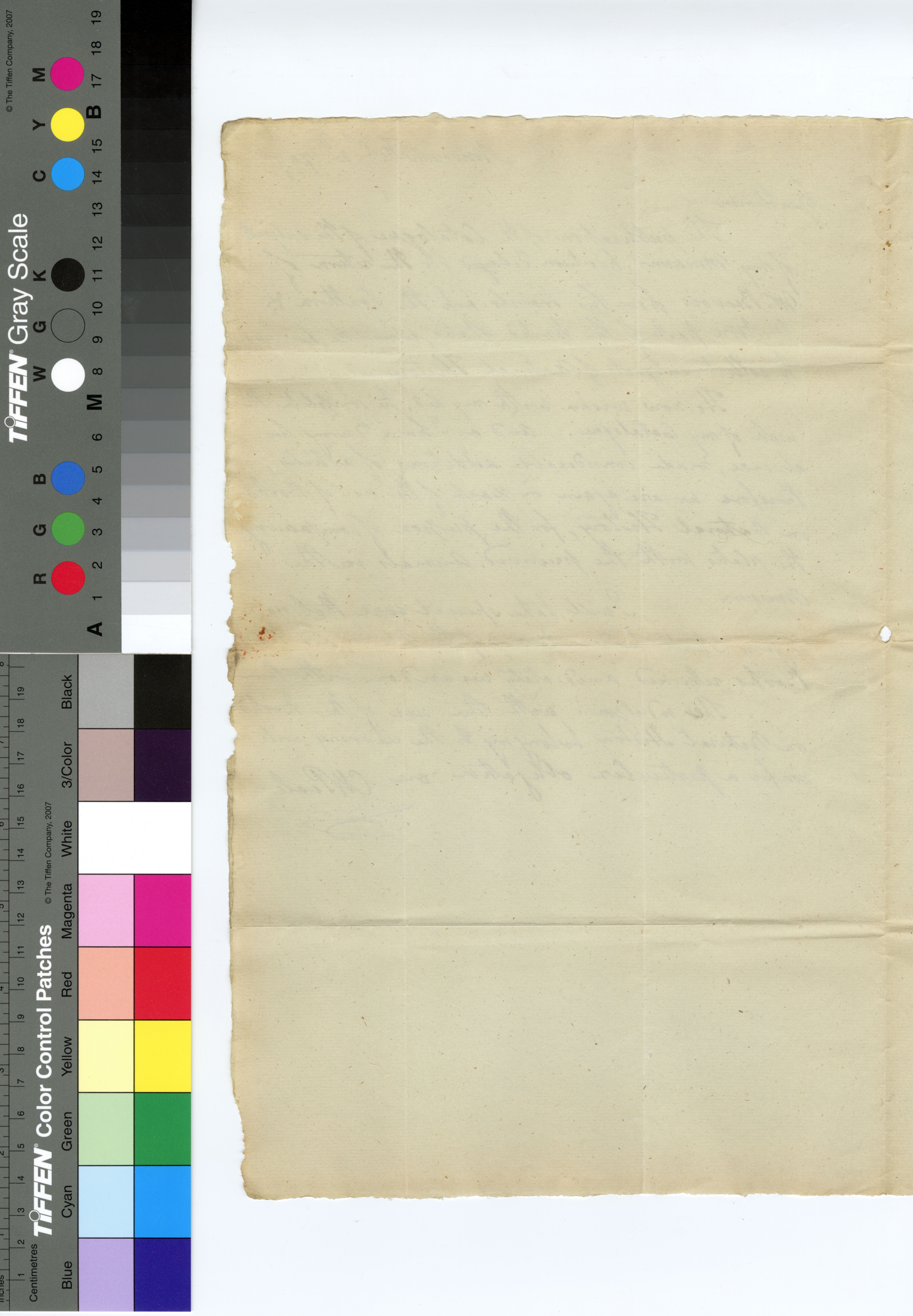
Gentlemen

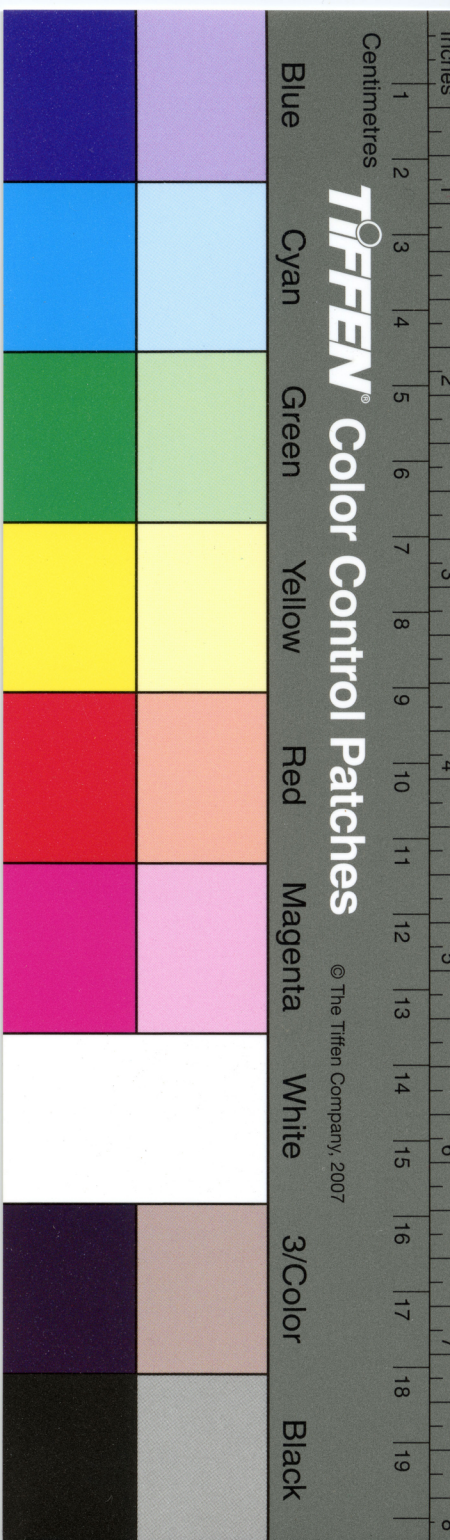
The publication of the Catalogue of the subjects of my Museum, has been delayed for the return of Mr. Beavois from his travels into the Southern & Western parts of the United States, where he has been to collect subjects of Natural History.

He now wishes with my aid, to complete the work of my Catalogue. And as I have during his absence, made considerable additions of articles, therefore we are again in want of the use of Books on Natural History, for the purpose of comparing the plates with the preserved animals in the Museum.

I will take special care that no injury shall be done to any of the plates, and the Books returned immediately we are done with them.

This indulgence with the use of the Books on Natural History belonging to the Library, will confer a particular obligation on C^W Peale.



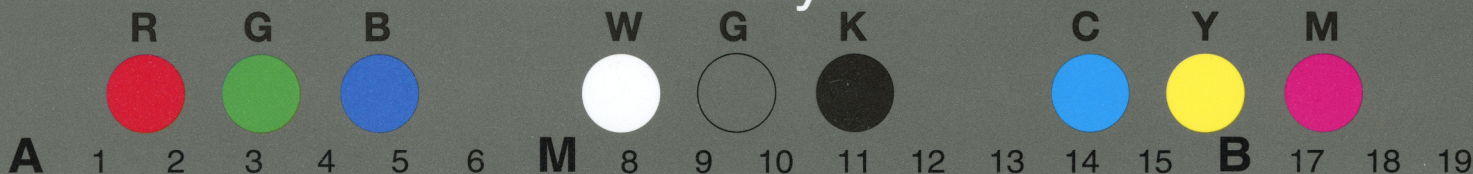




E. W. Pease Feb 12 1797
7442.8.20
To the Directors of the Library Company.

TIFFEN® Gray Scale

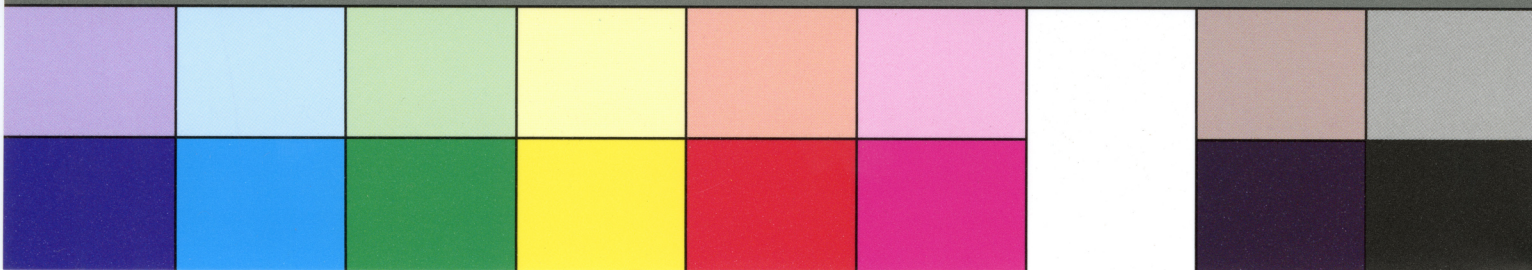
© The Tiffen Company, 2007



TIFFEN® Color Control Patches

© The Tiffen Company, 2007

Blue Cyan Green Yellow Red Magenta White 3/Color Black



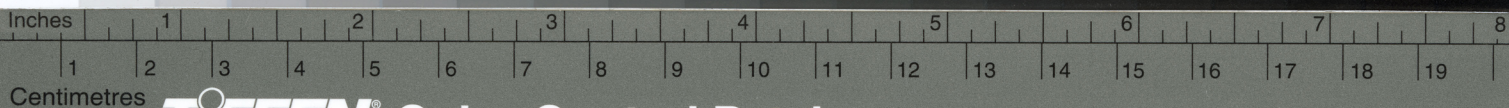
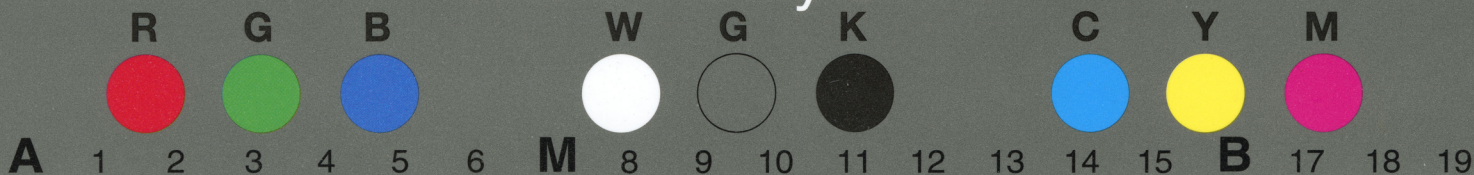
CHARLES WILLSON PEALE. Letter to the
Directors of the Library Company.
Philadelphia, February 2, 1797.

Peale consulted many scientific works
in the course of writing the Catalogue,
which was to be published in parts by
subscription and to run 300 to 500
pages. He had previously used the re-
sources of the Library Company, and in
this letter asks for their use again
since the absence of his co-author,
off on a collecting trip, had delayed
their work.

LIBRARY COMPANY OF PHILADELPHIA

TIFFEN® Gray Scale

© The Tiffen Company, 2007



TIFFEN® Color Control Patches

© The Tiffen Company, 2007

Blue Cyan Green Yellow Red Magenta White 3/Color Black

