

TIFFEN® Gray Scale



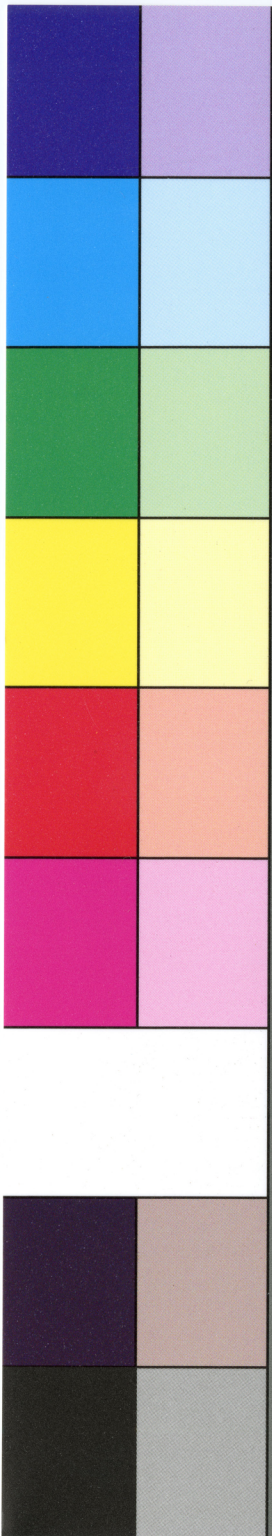
Inches 1 2 3 4 5 6 7 8

Centimetres 1 2 3 4 5 6 7 8 9 10 11 12 13 14 15 16 17 18 19

TIFFEN® Color Control Patches

© The Tiffen Company, 2007

Blue Cyan Green Yellow Red Magenta White 3/Color Black



EXECUTORS' SALE OF VALUABLE REAL ESTATE, to be held at the BRICK HOTEL of Samuel A. Sassaman, in the borough of New Hope, Bucks county, Pa., on WEDNESDAY, the 8th of January, 1862.

Pursuant to an order of the Orphans' Court of Bucks county, Pa., will be sold at Public Sale, all the following described valuable REAL ESTATE of CHARLES HUFFENAGLE, deceased, late of New Hope, Pa. This valuable property is situated as follows:

No. 1—Is that well known and improved FARM (Spring Dale), his late residence situated in the borough of New Hope, Pa., consisting of ONE HUNDRED AND EIGHTY-FOUR ACRES and one hundred and twenty-eight perches, more or less; adjoining lands of J. Simpson, W. Betts, J. Kitchen and others. The improvements are excellent and comfortable, viz: A large double, two story STONE MANSION, with all the modern improvements attached. Also, a two-story brick tenant house; a stone stable; ice house, with milk vault; a large and convenient barn, with stabling for eight horses and twelve cows; a corn crib, chicken house, pig sty, sheep pen and outsheds, &c., &c. The whole complete in every point and in good repair. A Peach Orchard of twelve hundred trees more or less; an Apple Orchard, and a great variety of other fine grafted fruit, &c. The land is of the best quality, well watered and under good fences.

No. 2—Consists of that established and well known STONE GRIST MILL, and extensive water power, in the borough of New Hope, a merchant and grist mill, with two water wheels and four run of stone, three of which are French Burrs, of superior quality, with grain and flour storehouse attached. The mill is driven by Ingham's never failing spring, with eighteen feet head and fall. This stream has at all times a full supply of water at all seasons of the year. This property now rents for ten per cent. per year.

No. 3—A valuable property being that well known VALUABLE FARM of NINETY-FOUR ACRES and eighty-one perches, more or less situated in Upper Makefield, township, Bucks county, Pennsylvania, two miles from Brownsburg, and one mile from the river Delaware, and now occupied by Reading La Rue. The improvements are a double two-story STONE DWELLING HOUSE, with a well of good water, and a pump in it at the kitchen door; a stone spring house, wagon house, straw house, blacksmith shop, and a large and convenient barn, &c., &c. A young apple orchard and a variety of fine grafted fruit. The land is of the best quality and well watered, and under good fences.

Sale to commence at two o'clock, P. M., when conditions will be made known by the Executors.

JOSEPH CABOT,
C. W. HUFFENAGLE,
Executors.

d21tj72

TIFFEN® Gray Scale

- | | | | | | | | | | | | | | | | | | | | | | | | |
|---|---|---|---|---|---|---|---|---|---|---|---|---|---|----|----|----|----|----|----|----|----|----|----|
| A | 1 | R | 2 | G | 3 | B | 4 | M | 5 | 6 | 7 | 8 | 9 | 10 | 11 | 12 | 13 | 14 | 15 | 16 | 17 | 18 | 19 |
| | | ● | | ● | | ● | | ● | | ● | | ● | | ● | | ● | | ● | | ● | | ● | |
| | | | | | | | | | | | | | | | | | | | | | | | |

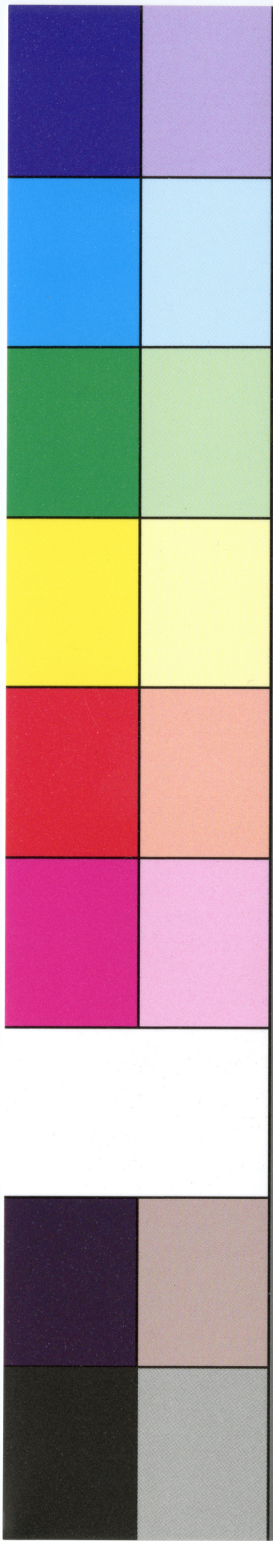
Inches 1 2 3 4 5 6 7 8 9 10 11 12 13 14 15 16 17 18 19

Centimetres

TIFFEN® Color Control Patches

© The Tiffen Company, 2007

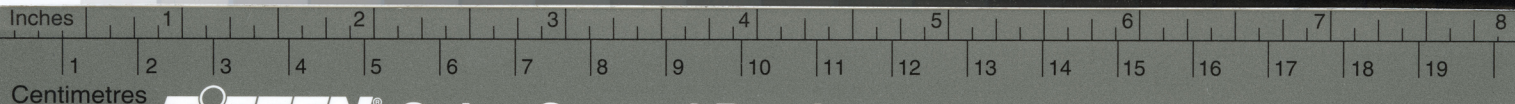
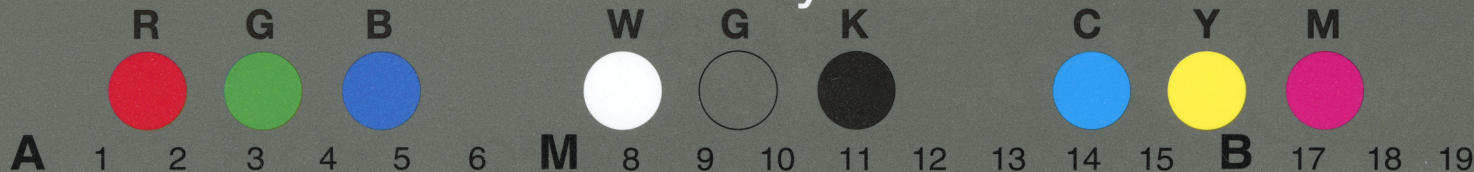
- | | | | | | | | | |
|------|------|-------|--------|-----|---------|-------|---------|-------|
| Blue | Cyan | Green | Yellow | Red | Magenta | White | 3/Color | Black |
|------|------|-------|--------|-----|---------|-------|---------|-------|



tion of the heart, melancholy, Hypochondria, Night Sweats, Languor, Giddiness, and all that class of cases, so fearfully fatal if unattended to in time, called *Female Weakness and Irregularities*. Also, Liver Derangements or Torpidity, and Liver Complaints, Diseases of the Kidneys, Scalding or Incontinence of the Urine, or any general derangement of the Urinary Organs, Pain in the Back, Side, and between the Shoulders, predisposition to Slight Colds, Hacking and Continued Cough, Emaciation, Difficulty of Breathing, and indeed we might enumerate many more still, but we have space only to say, it will not only cure the debility following Chills and Fever, but prevent all attacks arising from Miasmatic Influences, and cure the diseases at once, if already attacked. And as it acts directly and persistently upon the biliary system, arousing the Liver to action, promoting, in fact, all the excretions and secretions of the system, it will infallibly prevent any deleterious consequences following upon change of climate and water; hence all travelers should have a bottle with them, and all should take a table spoonful at least before eating. As it prevents costiveness, strengthens the digestive organs, it should be in the hands of all persons of sedentary habits, students, ministers, literary men. And all ladies not accustomed to much out door exercise should always use it. If they they will, they will find it an agreeable, pleasant, and efficient remedy against those ills which rob them of their beauty; for beauty cannot exist without health, and health cannot exist while the above irregularities continue. Then again, the Cordial is a perfect Mother's Relief. Taken a month or two before the final trial she will pass the dreadful period with perfect ease and safety. *There is no mistake about it, this Cordial is all we claim for it. Mothers try it!* And to you we appeal to detect the illness or decline not only of your daughters before it be too late, but also your sons and husbands, for while the former, from false delicacy, often goes down to a premature grave rather than let their condition be known in time, the latter are often so mixed up with the excitement of business that if it were not for you they too would travel in the same downward path, until too late to arrest their fatal fall. But the mother is always vigilant, and to you we confidently appeal; for we are sure your never failing affection will unerringly point you to Prof. Wood's Restorative Cordial and Blood Renovator as the remedy which should be always on hand in time of need. O. J. WOOD, Proprietor, 444 BROADWAY, New York, and 114 MARKET Street, St. Louis, Mo., and sold by all good Druggists. Price

TIFFEN® Gray Scale

© The Tiffen Company, 2007

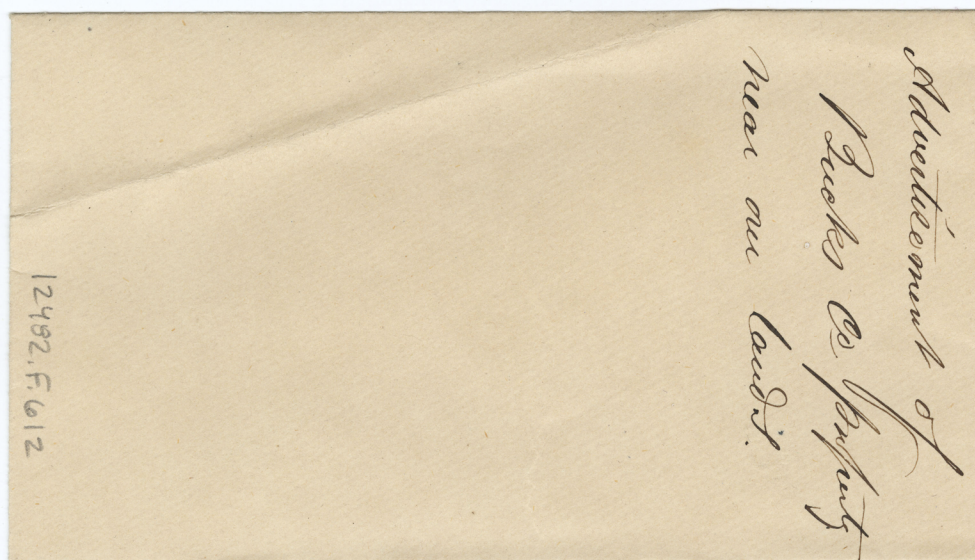
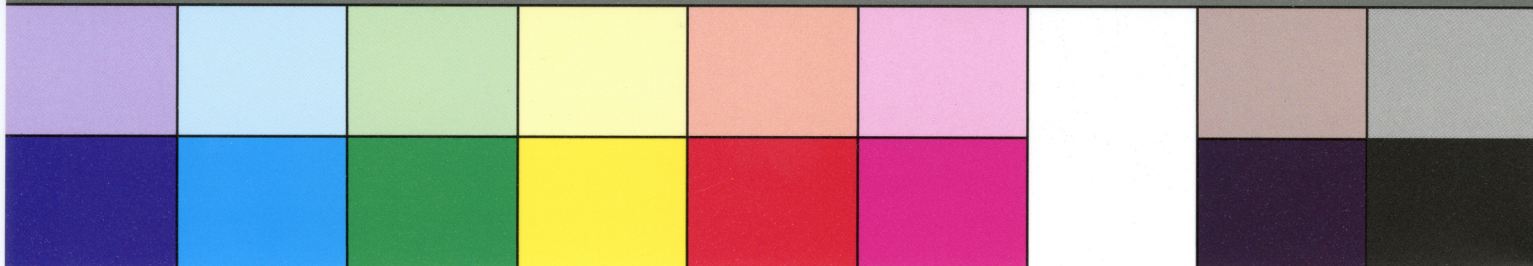


Centimetres

TIFFEN® Color Control Patches

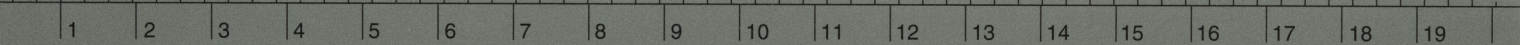
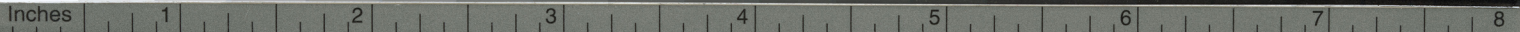
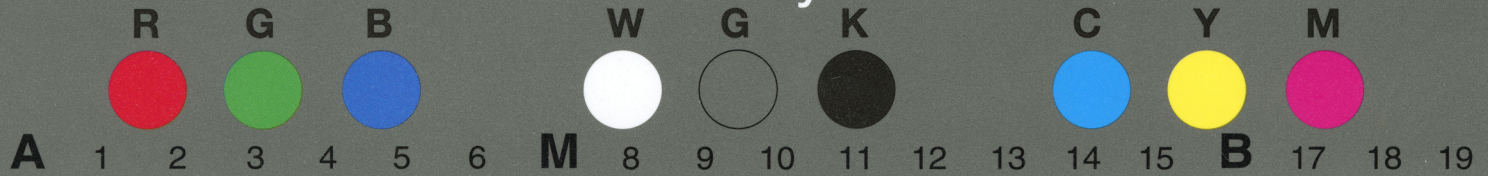
© The Tiffen Company, 2007

Blue Cyan Green Yellow Red Magenta White 3/Color Black



TIFFEN® Gray Scale

© The Tiffen Company, 2007



Centimetres

TIFFEN® Color Control Patches

© The Tiffen Company, 2007

Blue Cyan Green Yellow Red Magenta White 3/Color Black

