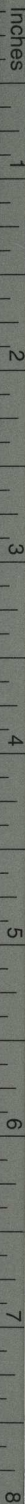
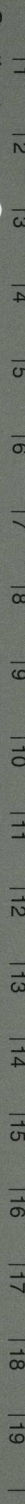


# TIFFEN® Gray Scale



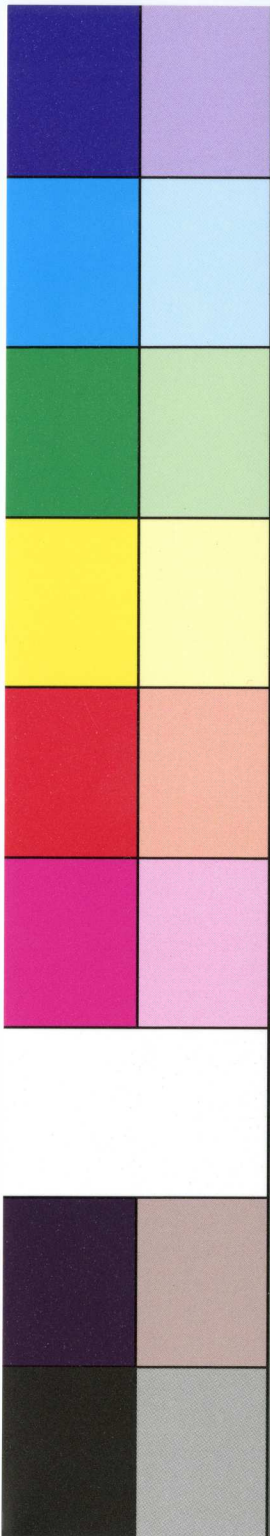
Centimetres



## TIFFEN® Color Control Patches

© The Tiffen Company, 2007

Blue Cyan Green Yellow Red Magenta White 3/Color Black



**EXECUTORS' SALE OF VALUABLE REAL ESTATE**, to be held at the **BRICK HOTEL** of Samuel A. Sassaman, in the borough of New Hope, Bucks county, Pa., on **WEDNESDAY**, the 8th of January, 1862.

Pursuant to an order of the Orphans' Court of Bucks county, Pa., will be sold at Public Sale, all the following described valuable **REAL ESTATE** of **CHARLES HUFFENAGLE**, deceased, late of New Hope, Pa. This valuable property is situated as follows:

No. 1—Is that well known and improved **FARM** (Spring Dale), his late residence situated in the borough of New Hope, Pa., consisting of **ONE HUNDRED AND EIGHTY-FOUR ACRES** and one hundred and twenty-eight perches, more or less; adjoining lands of J. Simpson, W. Betts, J. Kitchen and others. The improvements are excellent and comfortable, viz: A large double, two story **STONE MANSION**, with all the modern improvements attached. Also, a two-story brick tenant house; a stone stable; ice house, with milk vault; a large and convenient barn, with stabling for eight horses and twelve cows; a corn crib, chicken house, pig sty, sheep pen and outsheds, &c., &c. The whole complete in every point and in good repair. A Peach Orchard of twelve hundred trees more or less; an Apple Orchard, and a great variety of other fine grafted fruit, &c. The land is of the best quality, well watered and under good fences.

No. 2—Consists of that established and well known **STONE GRIST MILL**, and extensive water power, in the borough of New Hope, a merchant and grist mill, with two water wheels and four run of stone, three of which are French Burrs, of superior quality, with grain and flour storehouse attached. The mill is driven by Ingham's never failing spring, with eighteen feet head and fall. This stream has at all times a full supply of water at all seasons of the year. This property now rents for ten per cent. per year.

No. 3—A valuable property being that well known **VALUABLE FARM** of **NINETY-FOUR ACRES** and eighty-one perches, more or less situated in Upper Makefield, township, Bucks county, Pennsylvania, two miles from Brownsburg, and onemile from the river Delaware, and now occupied by Reading La Rue. The improvements are a double two-story **STONE DWELLING HOUSE**, with a well of good water, and a pump in it at the kitchen door; a stone spring house, wagon house, straw house, blacksmith shop, and a large and convenient barn, &c., &c. A young apple orchard and a variety of fine grafted fruit. The land is of the best quality and well watered, and under good fences.

Sale to commence at two o'clock, P. M., when conditions will be made known by the Executors.

JOSEPH CABOT,  
C. W. HUFFENAGLE,  
Executors.

d21tj72