

TIFFEN® Gray Scale

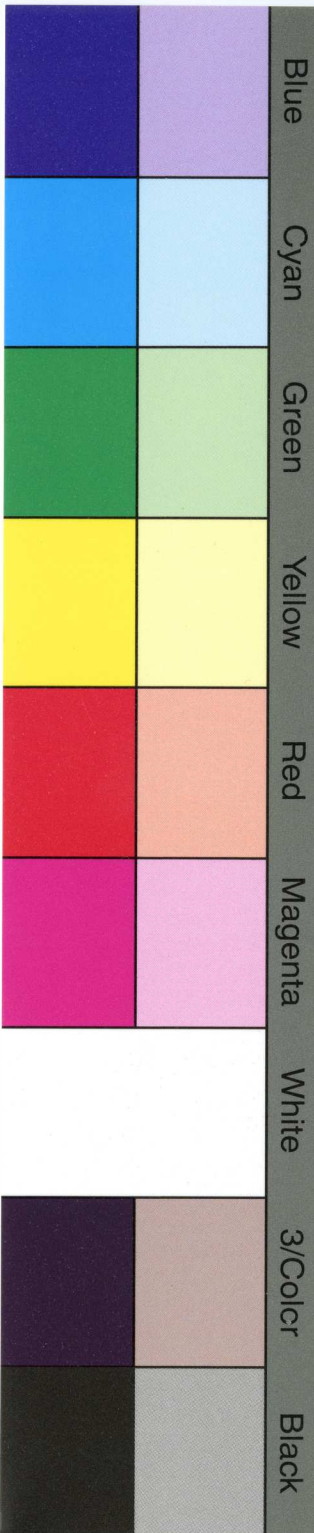


Inches 1 2 3 4 5 6 7 8

Centimetres 1 2 3 4 5 6 7 8 9 10 11 12 13 14 15 16 17 18 19

TIFFEN® Color Control Patches

© The Tiffen Company, 2007



tion of the heart, melancholy, Hypochondria, Night Sweats, Languor, Giddiness, and all that class of cases, so fearfully fatal if unattended to in time, called *Female Weakness and Irregularities*. Also, Liver Derangements or Torpidity, and Liver Complaints, Diseases of the Kidneys, Scalding or Incontinence of the Urine, or any general derangement of the Urinary Organs, Pain in the Back, Side, and between the Shoulders, predisposition to Slight Colds, Hacking and Continued Cough, Emaciation, Difficulty of Breathing, and indeed we might enumerate many more still, but we have space only to say, it will not only cure the debility following Chills and Fever, but prevent all attacks arising from Miasmatic Influences, and cure the diseases at once, if already attacked. And as it acts directly and persistently upon the biliary system, arousing the Liver to action, promoting, in fact, all the excretions and secretions of the system, it will infallibly prevent any deleterious consequences following upon change of climate and water; hence all travelers should have a bottle with them, and all should take a table spoonful at least before eating. As it prevents costiveness, strengthens the digestive organs, it should be in the hands of all persons of sedentary habits, students, ministers, literary men. And all ladies not accustomed to much out door exercise should always use it. If they they will, they will find it an agreeable, pleasant, and efficient remedy against those ills which rob them of their beauty; for beauty cannot exist without health, and health cannot exist while the above irregularities continue. Then again, the Cordial is a perfect Mother's Relief. Taken a month or two before the final trial she will pass the dreadful period with perfect ease and safety. *There is no mistake about it, this Cordial is all we claim for it. Mothers try it!* And to you we appeal to detect the illness or decline not only of your daughters before it be too late, but also your sons and husbands, for while the former, from false delicacy, often goes down to a premature grave rather than let their condition be known in time, the latter are often so mixed up with the excitement of business that if it were not for you they too would travel in the same downward path, until too late to arrest their fatal fall. But the mother is always vigilant, and to you we confidently appeal; for we are sure your never failing affection will unerringly point you to Prof. Wood's Restorative Cordial and Blood Renovator as the remedy which should be always on hand in time of need. O. J. WOOD, Proprietor, 444 BROADWAY, New York, and 114 MARKET Street, St. Louis, Mo., and sold by all good Druggists. Price