



THE "MONILLO"

Is formed by the insertion of many rows of figured lace gimp, in a novel manner. Is admired as a promenade garment.



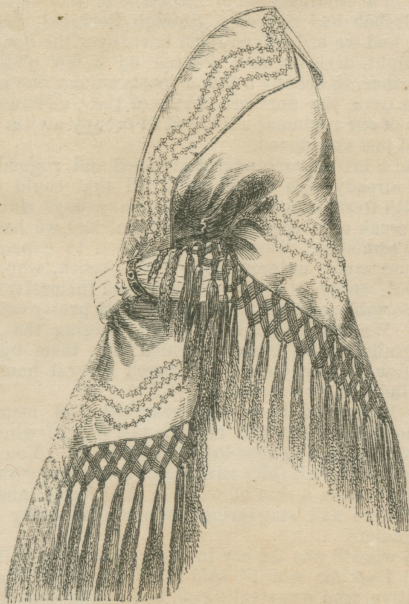
"LISETTE."

In plain Taffeta or watered Silk, with an ornamental edge of same material, and with a fall of deep fringe.



"CLEMENTINE,"

A design in colored silk, with a deep flouncing of lace, ornamented with several rows of black silk velvet.



THE "TEBA,"

An admired Mantilla, novel in style and trimming.



"CLOTILDE,"

A Talma, with deep ornamented border and fringe, covered with Chinese embroidery.



"DE MEDECIS,"

A richly embroidered Mantilla, with demi gilet or vest.

The above figures, exhibit the fashion of ladies "overcoats" for May 1853-