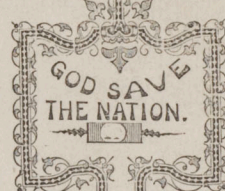


NELLIE LOST & FOUND

SONG AND CHORUS.

Words and Music by

HENRY C. WORK.



CH. CAGO:

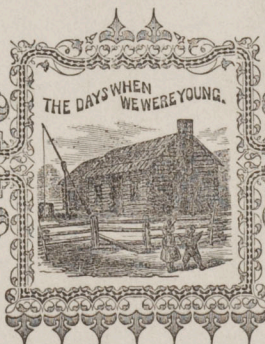
Published by ROOT & CADY, 95 Clark St.

W. A. POND & CO.
New York.

LEE & WALKER.
Philadelphia.

H. TOLMAN & CO.
Boston.

Entered according to Act of Congress, A. D. 1893, by Root & Cady, in the Clerk's Office of the District Court for the Northern District of Illinois.



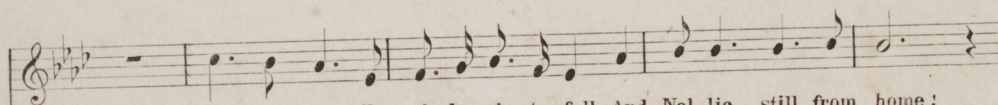
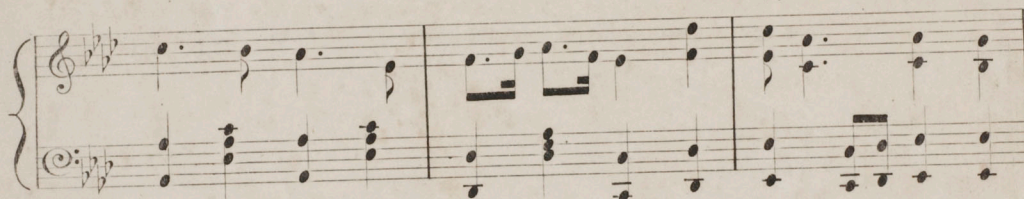
NELLIE LOST AND FOUND.



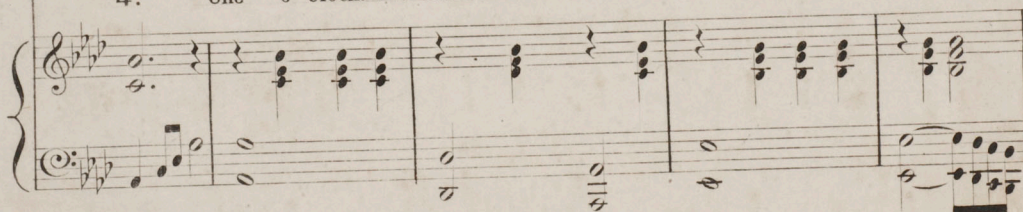
H.C. WORK.
No 6.

With Expression.

INTRODUCTION



1. Ten o' clock! the rain be-gins to fall, And Nel-lie still from home!
2. Eleven o' clock! the lit-tle brothers wait, Still hop-ing her re-turn;
3. Twelve o' clock! and in the for-est wild, What ter-rors rule the hour!
4. One o' clock! me-thinks I hear a voice, With fi-dings in its tone!



Vain - ly now, her lov - ing name we call, Oh which - er does she roam:
 Peep - ing through the lat - tice of the gate, Their dar - ling to dis - cern.
 Who can tell what foes surround the child, Or shield her from their power:
 Does it bid this trembling heart rejoice, Or sor - row makes it known:

Can it be she wan - ders from the street, Thro' the wood to find her lonely way,
 Wea - ry now they turn them to the door, While their tears, for lips that now are dumb,
 Storms to face and tor - rents to be cross'd, Beasts of prey that in the darkness roam;
 Still I hear that mid - night ech - o stirr'd, Sure - ly too, it hears a joy - ful sound;

Bless the child! I fear her lit - tle feet Have car - ried her a - - stray.
 Ask the ques - tion of - ten asked before, Oh moth - er, will she come:
 Would to God that on - ly I were lost, And Nel - lie safe at home:
 Praise the Lord! a moth - er's prayer is heard, The dar - ling one is found:

CHORUS.

A musical score for a four-part vocal setting of "The Boy Who Cried Wolf." The score is written for four voices (AIR, ALTO, TENOR, BASE) and piano accompaniment. The key signature is B-flat major (two flats) and the time signature is 3/4. The lyrics are: "Wake the boys to search for Nel-lie! Stay not for the dawn; Thro' the wood the mid-night ech-oes Bear a joy-ful sound;". The piano accompaniment features a simple harmonic structure with chords in the right hand and single notes or simple patterns in the left hand. The score is presented on a single page with a decorative border.

AIR.

Wake the boys to search for Nel-lie! Stay not for the dawn;

ALTO.

TENOR.

Thro' the wood the mid-night ech-oes Bear a joy-ful sound;

BASE.

For last verse

Who shall sleep when from the mother's fold One lit-tle lamb is gone?

Praise the Lord! a moth-er's prayer is heard, The dar-ling one is found.

PBX
32
6601.7
1863



Standard Songs,
by
VARIOUS AUTHORS

In addition to our standard works, we have just issued a new method for the Piano-forte, called

THE MUSICAL CURRICULUM.

As its name indicates, it is a
COURSE OF MUSICAL STUDY.
BY
GEO. F. ROOT.

The MUSICAL CURRICULUM is something
ENTIRELY NEW,
And will, we are confident, inaugurate
AN ERA

In the study and practice of the
PIANO-FORTE.
And the subjects that are connected with it.

RETAIL PRICE \$4.50.
Sent, postpaid, on receipt of marked price. No one will think the price too large after examining it.

ROOT & CADY.